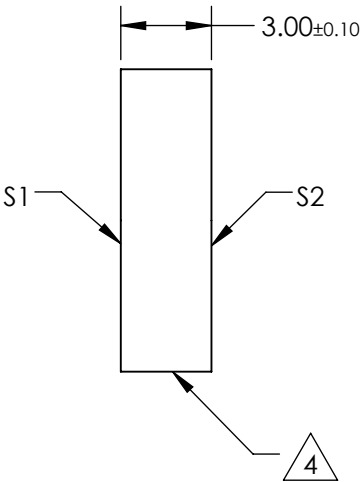
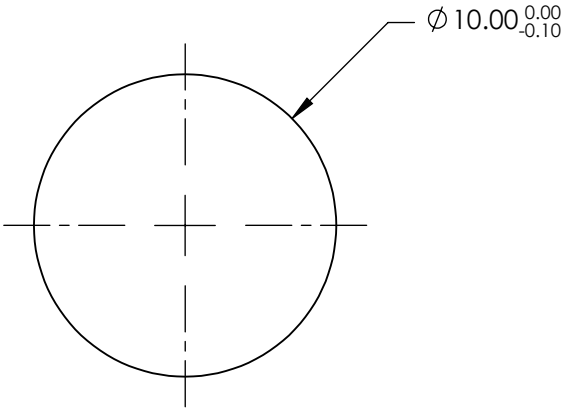
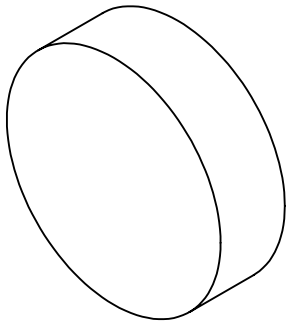



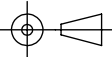
NOTES:

- 1. SUBSTRATE:
EXCIMER GRADE UV FUSED SILICA
- 2. SURFACE S2 TO BE PARALLEL WITH S1 TO 5 arcsec
- 3. COATING (APPLY ACROSS CLEAR APERTURE)
S1 & S2: R(ABS) < 0.25% @ 355nm, AOI: 0°
- 4. FINE GRIND SURFACE
- 5. RoHS COMPLIANT



FOR INFORMATION ONLY:
DO NOT MANUFACTURE
PARTS TO THIS DRAWING

SPECIFICATIONS SUBJECT TO CHANGE WITHOUT NOTICE
DIMENSIONS ARE FOR REFERENCE ONLY

	S1	S2	 Edmund Optics®			
SHAPE	PLANO	PLANO		TITLE	10mm DIA. 355nm LASER V-COAT, λ/20 FUSED SILICA WINDOW	
SURFACE QUALITY	10 - 5	10 - 5				
DESIGN WAVELENGTH	355nm	355nm				
BEVEL	PROTECTIVE AS NEEDED	PROTECTIVE AS NEEDED		DWG NO	65857	SHEET 1 OF 1
			ALL DIMS IN	mm		