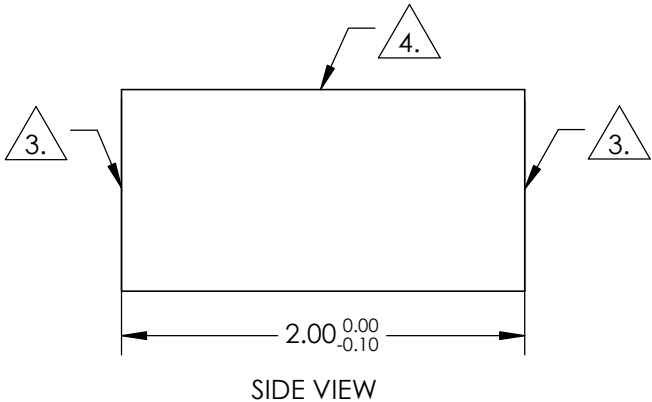
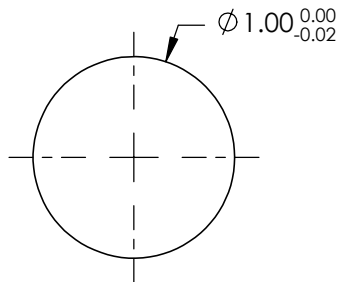


NOTES:

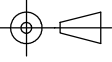
- 1. SUBSTRATE: FUSED SILICA
- 2. COEFFICIENT OF THERMAL EXPANSION:
CTE = 0.55 [10⁻⁷/°C]
- 3. FINE GRIND SURFACE
- 4. POLISHED SURFACE
- 4. RoHS COMPLIANT




**FOR INFORMATION ONLY:
DO NOT MANUFACTURE
PARTS TO THIS DRAWING**

SPECIFICATIONS SUBJECT TO CHANGE WITHOUT NOTICE
DIMENSIONS ARE FOR REFERENCE ONLY

REV. A	
WAVELENGTH RANGE (nm)	200 - 2200
SURFACE QUALITY 	40-20
TYPE	ROD LENS
BEVEL	PROTECTIVE AS NEEDED

THIRD ANGLE
PROJECTION 

ALL DIMS IN mm



Edmund Optics®

TITLE	Ø1mm x 2mm, UV FUSED SILICA ROD LENS		
DWG NO	49830	SHEET 1 OF 1	