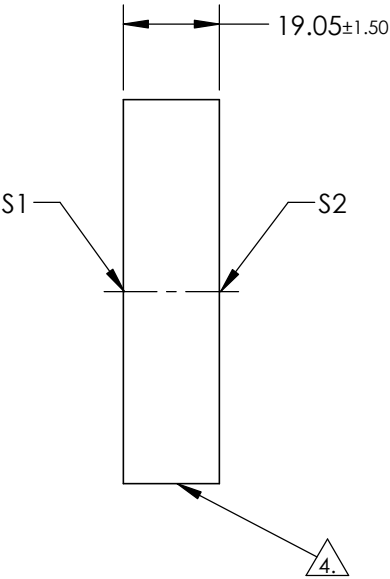
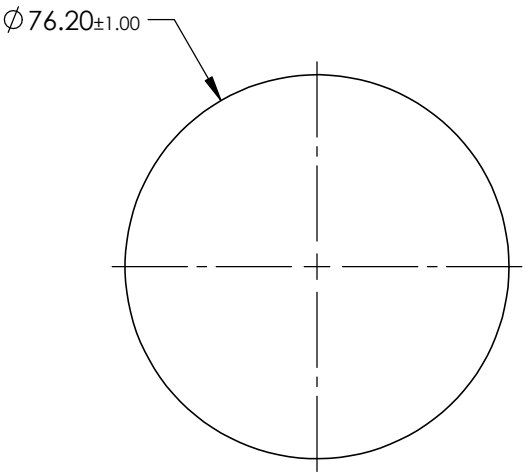


NOTES:

- 1. SUBSTRATE:
Fused Silica (Corning 7980)
- 2. SURFACE S2 TO BE PARALLEL WITH S1 TO <1 arcmin
- 3. COATING (APPLY ACROSS CLEAR APERTURE)
S1 & S2: NONE
- 4. FINE GRIND SURFACE
- 5. RoHS COMPLIANT



**FOR INFORMATION ONLY:
DO NOT MANUFACTURE
PARTS TO THIS DRAWING**

SPECIFICATIONS SUBJECT TO CHANGE WITHOUT NOTICE
DIMENSIONS ARE FOR REFERENCE ONLY

	S1	S2
SHAPE	PLANO	PLANO
SURFACE FLATNESS	$\lambda/20$	$\lambda/20$
SURFACE QUALITY	60-40	60-40
CLEAR APERTURE	$\phi 68.58$	$\phi 68.58$
BEVEL	PROTECTED AS NEEDED	PROTECTED AS NEEDED

THIRD ANGLE PROJECTION		Edmund Optics®	
ALL DIMS IN mm		TITLE	3" Dia. $\lambda/20$ Fused Silica Dual Surface Flat
DWG NO		48131	SHEET 1 OF 1