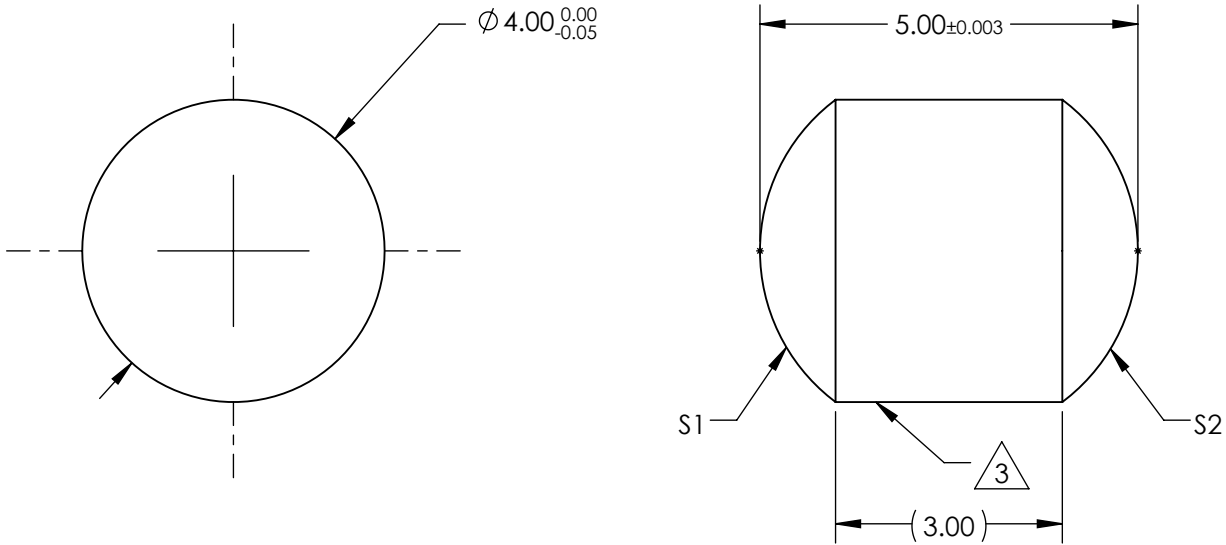


NOTES:

1. SUBSTRATE MATERIAL:  
N-BK7
2. COATING (APPLY ACROSS CLEAR APERTURE)
- S1: R(avg) ≤0.5% @ 600 - 1050nm
- S2: NONE


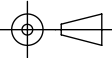
3. FINE GROUND SURFACE

4. RoHS COMPLIANT



**FOR INFORMATION ONLY:  
DO NOT MANUFACTURE  
PARTS TO THIS DRAWING**

SPECIFICATIONS SUBJECT TO CHANGE WITHOUT NOTICE  
DIMENSIONS ARE FOR REFERENCE ONLY

REV. A	S1	S2	 Edmund Optics®			
SHAPE	CONVEX	CONVEX		TITLE	4.0mm DIAMETER X 5.0mm LENGTH NIR I COATED, N-BK7 DRUM LENS	
RADIUS	2.5	2.5		DWG NO	45839	SHEET 1 OF 1
SURFACE QUALITY	40-20	40-20				
BEVEL	PROTECTIVE AS NEEDED	PROTECTIVE AS NEEDED		ALL DIMS IN	mm	