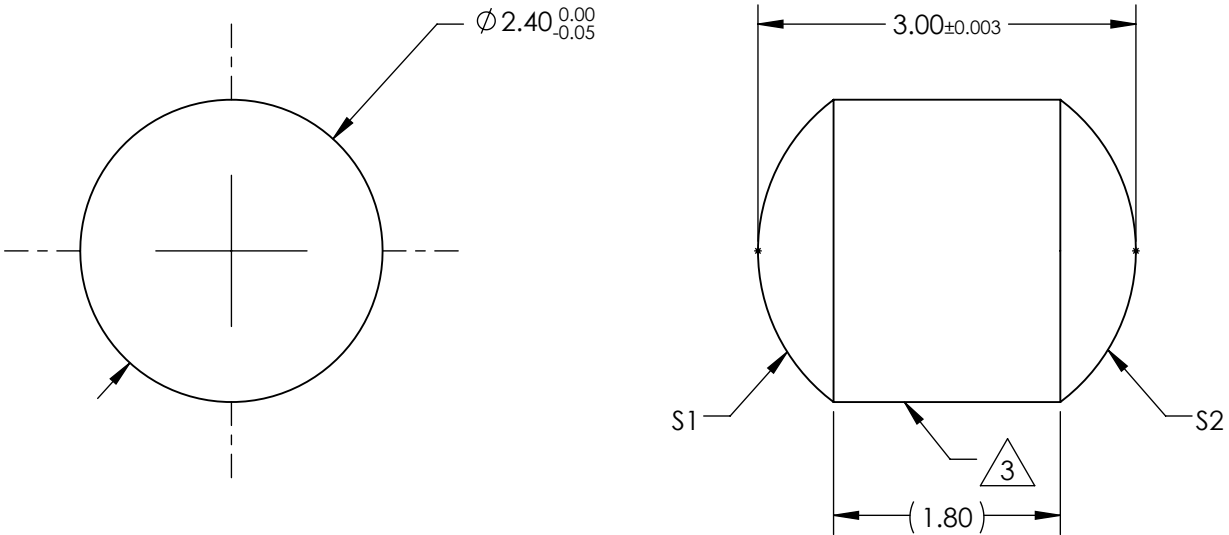


NOTES:

1. SUBSTRATE MATERIAL:
N-BK7
2. COATING (APPLY ACROSS CLEAR APERTURE)
- S1: R(avg) ≤0.5% @ 600 - 1050nm
- S2: NONE


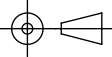
3. FINE GROUND SURFACE

4. RoHS COMPLIANT



**FOR INFORMATION ONLY:
DO NOT MANUFACTURE
PARTS TO THIS DRAWING**

SPECIFICATIONS SUBJECT TO CHANGE WITHOUT NOTICE
DIMENSIONS ARE FOR REFERENCE ONLY

REV. A	S1	S2	 Edmund Optics®			
SHAPE	CONVEX	CONVEX		TITLE	2.4mm DIAMETER X 3.0mm LENGTH NIR I COATED, N-BK7 DRUM LENS	
RADIUS	1.5	1.5		DWG NO	45837	SHEET 1 OF 1
SURFACE QUALITY	40-20	40-20				
BEVEL	PROTECTIVE AS NEEDED	PROTECTIVE AS NEEDED		ALL DIMS IN	mm	