

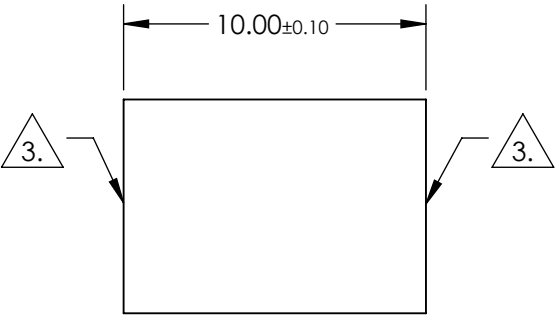
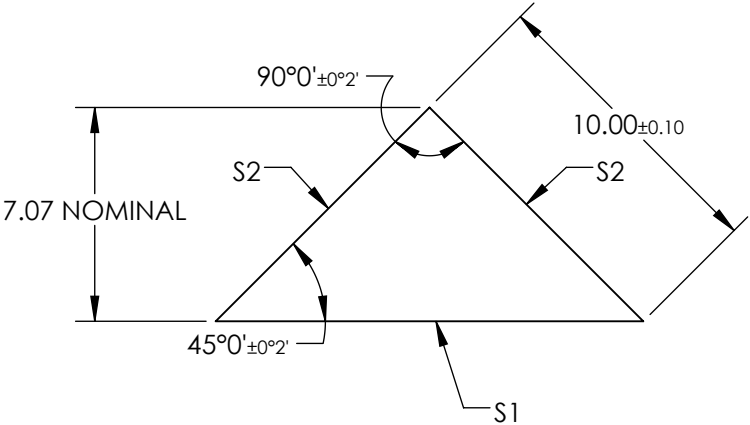
NOTES:

- 1. SUBSTRATE:
N-BK7
- 2. COATING (APPLY ACROSS COATING APERTURE)
S1: ALUMINUM WITH PROTECTIVE OVERCOAT W/ BLACK OVERPAINT
R(AVG) > 85% FROM 400-700nm @ 45° AOI
R(AVG) > 90% FROM 400-2,000nm @ 45° AOI

S2: ¼ WAVE MgF2 @ 550nm
R(AVG) < 1.75% FROM 400-700nm (N-BK7)

3. FINE GRIND SURFACE

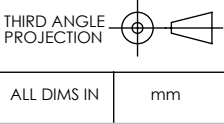
- 4. RoHS COMPLIANT
- 5. TYPICAL ENERGY DENSITY: 0.3 J/cm² @ 10ns @ 532nm & 1064nm



**FOR INFORMATION ONLY:
DO NOT MANUFACTURE
PARTS TO THIS DRAWING**

SPECIFICATIONS SUBJECT TO CHANGE WITHOUT NOTICE
DIMENSIONS ARE FOR REFERENCE ONLY

REV. A	S1	S2
SHAPE	PLANO	PLANO
SURFACE QUALITY	60-40	60-40
CLEAR APERTURE	12.69 x 9	9 x 9
COATING APERTURE	12.69 x 9	9 x 9
SURFACE FLATNESS	$\lambda/4$	$\lambda/4$
BEVEL	PROTECTIVE AS NEEDED	PROTECTIVE AS NEEDED



Edmund Optics®

TITLE
10mm, Aluminum & MgF2 Coated N-BK7
Right Angle Prism

DWG NO
45388

SHEET
1 OF 1