

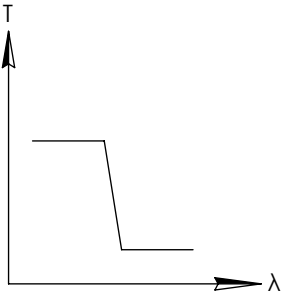
NOTES:

1. SUBSTRATE
2. SURFACE S2 TO BE PARALLEL WITH SURFACE S1 TO WITHIN 5 arcsec
3. COATING (APPLY ACROSS COATING APERTURE)  
ENVIRONMENTAL DURABILITY:  
PHYSICAL DURABILITY:  
PERFORMANCE SPECIFICATIONS:  
T(avg): >85% FROM 520 - 960nm FOR RANDOM POLARIZATION @ 45° AOI  
T(abs): 80% FROM 520 - 960nm FOR ALL POLARIZATIONS @ 45° AOI  
R(avg): >97% FROM 1050 - 1300nm FOR RANDOM POLARIZATION @ 45° AOI  
R(abs): 95% FROM 1050 - 1300nm FOR ALL POLARIZATIONS @ 45° AOI  
T(abs): = 50% 1000nm @ 45° AOI

S1: HARD COATED  
S2: SINGLE LAYER MgF2

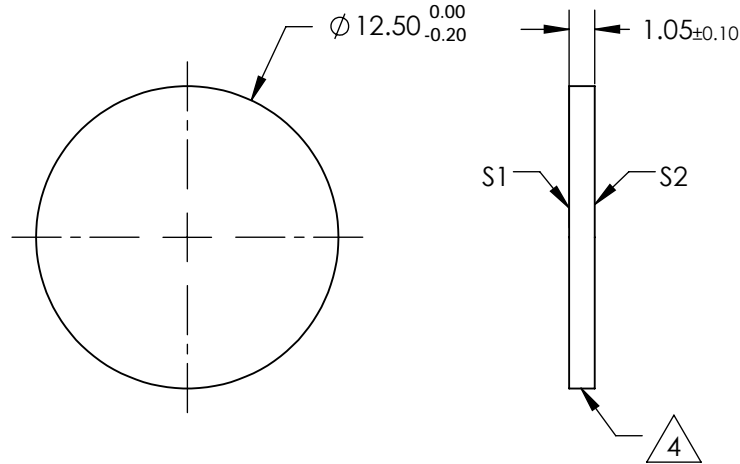
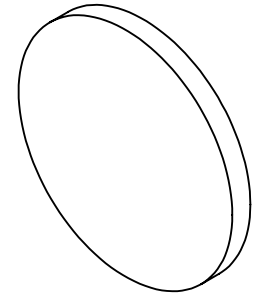
4. FINE GRIND SURFACE

5. POWER, IRREGULARITY, AND SURFACE QUALITY SPECIFICATIONS  
APPLY ACROSS CLEAR APERTURE
6. TRANSMITTED WAVEFRONT DISTORTION RMS@ 632.8nm  $\leq \frac{1}{4} \lambda$
7. ROHS COMPLIANT



SHORTPASS FILTER

**FOR INFORMATION ONLY:  
DO NOT MANUFACTURE  
PARTS TO THIS DRAWING**

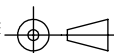


SPECIFICATIONS SUBJECT TO CHANGE WITHOUT NOTICE  
DIMENSIONS ARE FOR REFERENCE ONLY

|                  | S1                   | S2                   |
|------------------|----------------------|----------------------|
| SHAPE            | PLANO                | PLANO                |
| SURFACE QUALITY  | 60-40                | 60-40                |
| CLEAR APERTURE   | Ø11.00               | Ø11.00Ø11.00         |
| COATING APERTURE | Ø11.00               | Ø11.00               |
| BEVEL            | PROTECTIVE AS NEEDED | PROTECTIVE AS NEEDED |

**Edmund Optics®**

THIRD ANGLE  
PROJECTION



ALL DIMS IN

mm

TITLE

Ø12.5mm, 1000nm DICHROIC SHORTPASS  
FILTER

DWG NO

86677

SHEET  
1 OF 1