

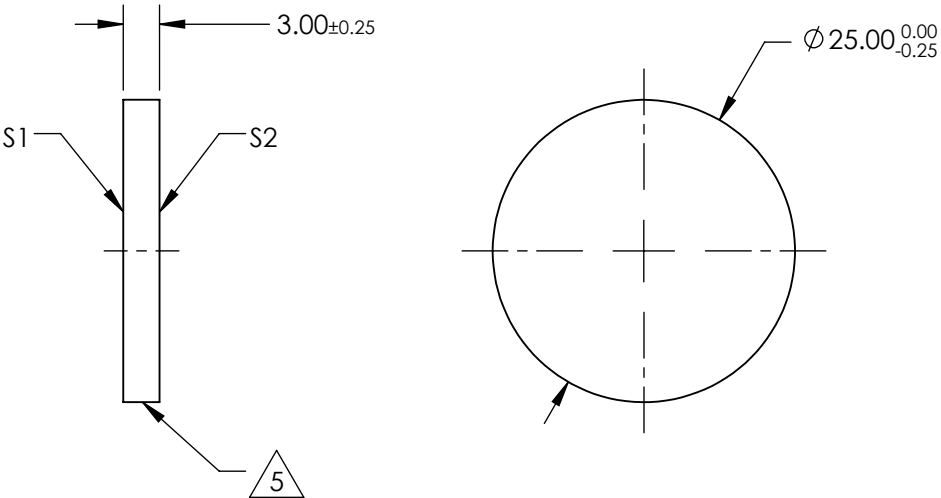
NOTES:

- 1. SUBSTRATE MATERIAL:
N-BK7
- 2. ROHS COMPLIANT
- 3. SURFACE S1 TO BE PARALLEL WITH SURFACE S2 TO WITHIN ≤ 3 ARCMIN
- 4. COATING (APPLY ACROSS CLEAR APERTURE)

S1: 20% R $\pm 5\%$ @ 550nm
80% T $\pm 5\%$ @ 550nm

S2: AR R(avg) $\leq 1\%$, R(abs) $\leq 2\%$ @ 400 - 700nm

5. CUT WITH 0.25mm MAXIMUM EDGE CHIP



**FOR INFORMATION ONLY:
DO NOT MANUFACTURE
PARTS TO THIS DRAWING**

SPECIFICATIONS SUBJECT TO CHANGE WITHOUT NOTICE
DIMENSIONS ARE FOR REFERENCE ONLY

REV. A	S1	S2	<div><div><div><div></div><div></div></div><div><div></div><div></div></div></div><div>Edmund Optics®</div></div>			
SHAPE	PLANO	PLANO	<div>THIRD ANGLE PROJECTION</div> <div><div><div></div><div></div></div><div></div></div>			
ANGLE OF INCIDENCE	45°	45°				
SURFACE QUALITY	60-40	60-40	TITLE			
SURFACE FLATNESS	1λ PER 25mm	1λ PER 25mm	ALL DIMS IN	mm	DWG NO	SHEET 1 OF 1
					68367	
			Ø25mm, 20 R/80 T, PLATE BEAMSPLITTER			