

NOTES:

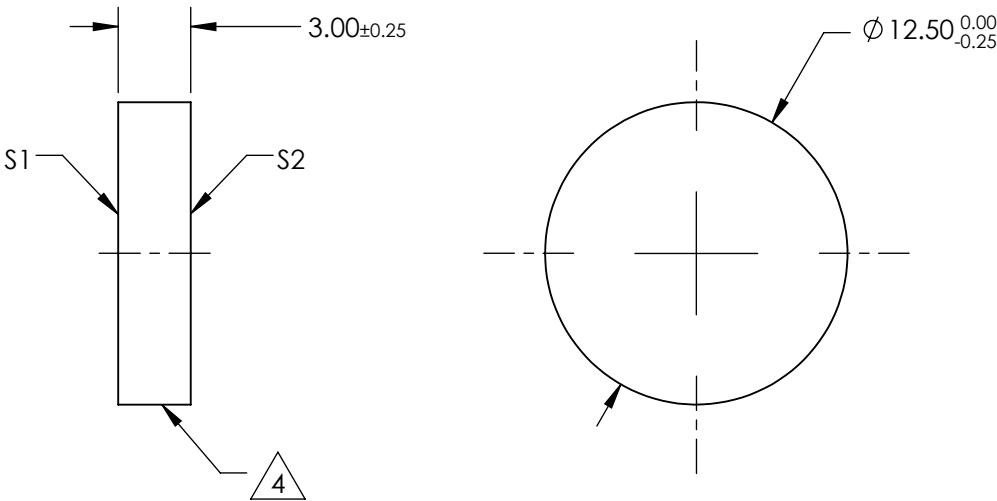
- 1. SUBSTRATE MATERIAL:
N-BK7
- 2. SURFACE S2 TO BE PARALLEL WITH SURFACE S1 TO WITHIN $\leq 3\text{ARCMIN}$
- 3. COATING (APPLY ACROSS CLEAR APERTURE)

S1: 70% R $\pm 5\%$ @ 550nm
30% T $\pm 5\%$ @ 550nm

S2: AR R(avg) $\leq 1\%$, R(abs) $\leq 2\%$ @ 700 - 1100nm


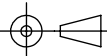
4. CUT WITH 0.25mm MAXIMUM EDGE CHIP

5. ROHS COMPLIANT



**FOR INFORMATION ONLY:
DO NOT MANUFACTURE
PARTS TO THIS DRAWING**

SPECIFICATIONS SUBJECT TO CHANGE WITHOUT NOTICE
DIMENSIONS ARE FOR REFERENCE ONLY

	S1	S2				
SHAPE	PLANO	PLANO	<div>THIRD ANGLE PROJECTION</div> 	TITLE	Ø12.5mm, 70 R/30 T, PLATE BEAMSPLITTER	
ANGLE OF INCIDENCE	45°	45°				
SURFACE QUALITY	60-40	60-40				
SURFACE FLATNESS	1λ PER 25mm	1λ PER 25mm	ALL DIMS IN	mm	DWG NO	48395
			SHEET 1 OF 1			