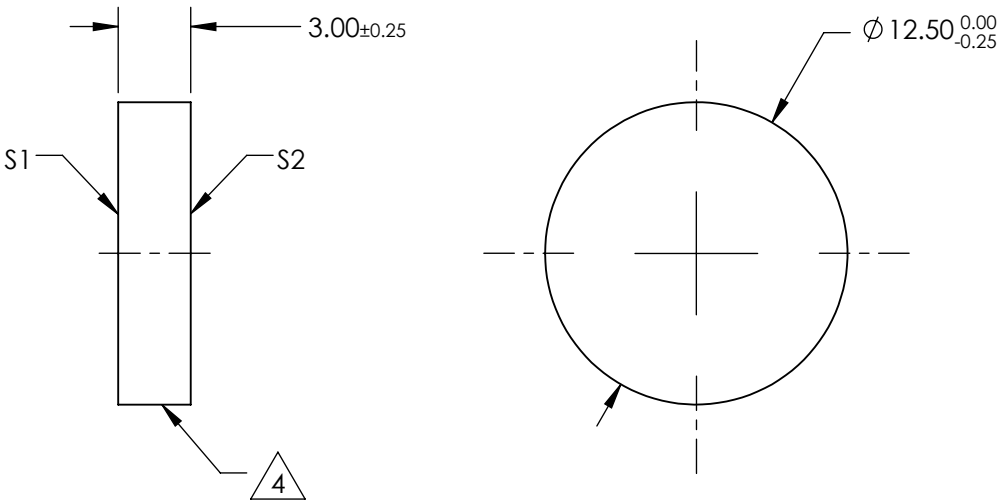


NOTES:

1. SUBSTRATE MATERIAL:
N-BK7
2. SURFACE S2 TO BE PARALLEL WITH SURFACE S1 TO WITHIN $\leq 3\text{ARCMIN}$
3. COATING (APPLY ACROSS CLEAR APERTURE)

S1: 30% R $\pm 5\%$ @ 550nm
70% T $\pm 5\%$ @ 550nm

S2: AR R(avg) $\leq 1\%$, R(abs) $\leq 2\%$ @ 400 - 700nm
4. CUT WITH 0.25mm MAXIMUM EDGE CHIP
5. ROHS COMPLIANT



**FOR INFORMATION ONLY:
DO NOT MANUFACTURE
PARTS TO THIS DRAWING**

SPECIFICATIONS SUBJECT TO CHANGE WITHOUT NOTICE
DIMENSIONS ARE FOR REFERENCE ONLY

| | | | | | | |
|--------------------|-------------|-------------|-------------------------------------------------------------------------------------------------------------------|----|--------|--------------|
| | S1 | S2 | <div><div><div><div></div><div></div></div><div><div></div><div></div></div></div><div>Edmund Optics®</div></div> | | | |
| SHAPE | PLANO | PLANO | <div>THIRD ANGLE PROJECTION</div> <div><div><div></div><div></div></div><div></div></div> | | | |
| ANGLE OF INCIDENCE | 45° | 45° | | | | |
| SURFACE QUALITY | 60-40 | 60-40 | TITLE | | | |
| SURFACE FLATNESS | 1λ PER 25mm | 1λ PER 25mm | ALL DIMS IN | mm | DWG NO | SHEET 1 OF 1 |
| | | | | | 48388 | |