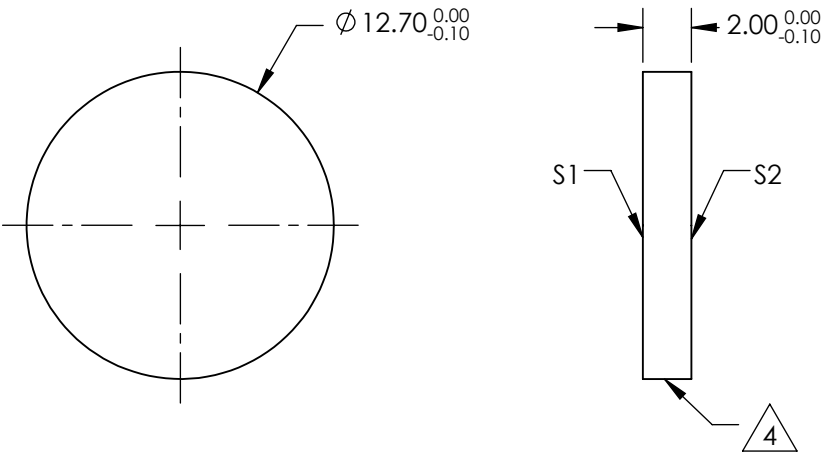
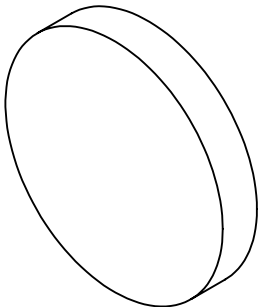



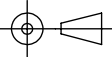
NOTES:

- 1. SUBSTRATE:
BARIUM FLUORIDE (BAF2)
- 2. SURFACE S2 TO BE PARALLEL TO S1 WITHIN 3 ARCMIN
- 3. COATING (APPLY ACROSS CLEAR APERTURE)
S1 & S2: NONE
- 4. FINE GRIND SURFACE
- 5. RoHS COMPLIANT



**FOR INFORMATION ONLY:
DO NOT MANUFACTURE
PARTS TO THIS DRAWING**

SPECIFICATIONS SUBJECT TO CHANGE WITHOUT NOTICE
DIMENSIONS ARE FOR REFERENCE ONLY

		S1	S2				 Edmund Optics®	
SHAPE		PLANO	PLANO		TITLE		Ø12.5mm x 2mm THICK, BARIUM FLUORIDE WINDOW	
SURFACE QUALITY		60-40	60-40		DWG NO		87700	
CLEAR APERTURE		90%	90%				SHEET 1 OF 1	
BEVEL		PROTECTIVE AS NEEDED	PROTECTIVE AS NEEDED		ALL DIMS IN	mm		