

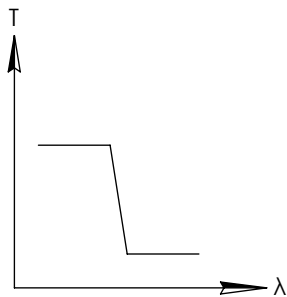
**FOR INFORMATION ONLY:  
DO NOT MANUFACTURE  
PARTS TO THIS DRAWING**

NOTES:

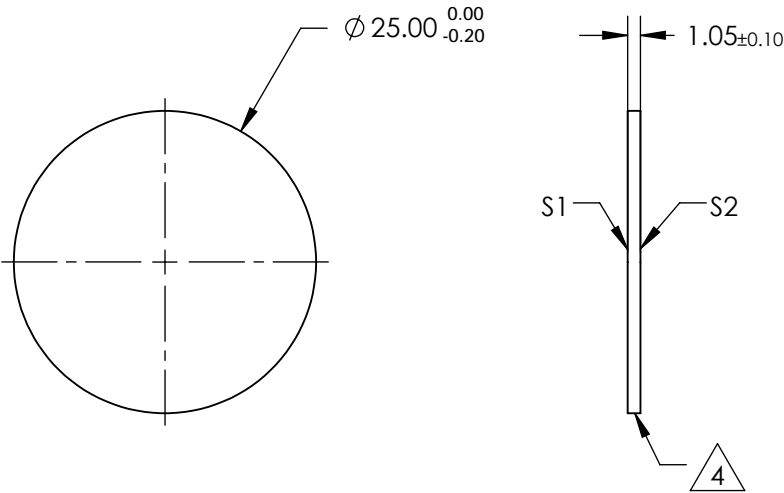
- SUBSTRATE
  - SURFACE S2 TO BE PARALLEL WITH SURFACE S1 TO WITHIN 5 arcsec
  - COATING (APPLY ACROSS COATING APERTURE)  
ENVIRONMENTAL DURABILITY:  
PHYSICAL DURABILITY:  
PERFORMANCE SPECIFICATIONS:  
T(avg):>85% FROM 495 - 912 nm FOR RANDOM POLARIZATION @ 45° AOI  
T(abs): >80% FROM 495 - 912 nm FOR ALL POLARIZATION @ 45° AOI  
R(avg):>97% FROM 997 - 1235 nm FOR RANDOM POLARIZATION @ 45° AOI  
R(abs): >95% FROM 997 - 1235 nm FOR ALL POLARIZATION @ 45° AOI  
T(abs): = 50% 950nm @ 45° AOI
- S1: HARD COATED  
S2: SINGLE LAYER MgF2

4. FINE GRIND SURFACE

- POWER, IRREGULARITY, AND SURFACE QUALITY SPECIFICATIONS  
APPLY ACROSS CLEAR APERTURE
- TRANSMITTED WAVEFRONT DISTORTION RMS@ 632.8nm  $\leq \frac{1}{4} \lambda$
- ROHS COMPLIANT



SHORTPASS FILTER



SPECIFICATIONS SUBJECT TO CHANGE WITHOUT NOTICE  
DIMENSIONS ARE FOR REFERENCE ONLY

	S1	S2
SHAPE	PLANO	PLANO
SURFACE QUALITY	60-40	60-40
CLEAR APERTURE	Ø22.00	Ø22.00
BEVEL	PROTECTIVE AS NEEDED	PROTECTIVE AS NEEDED

THIRD ANGLE PROJECTION		Edmund Optics®	
TITLE		950nm, 25mm DIAMETER, DICHROIC SHORTPASS	
ALL DIMS IN	mm	DWG NO	86688
			SHEET 1 OF 1