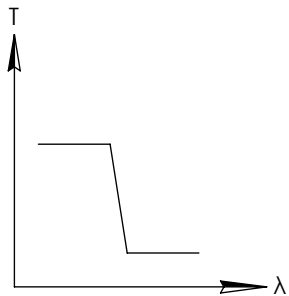


NOTES:

1. SUBSTRATE
2. SURFACE S2 TO BE PARALLEL WITH SURFACE S1 TO WITHIN 5 arcsec
3. COATING (APPLY ACROSS COATING APERTURE)  
ENVIRONMENTAL DURABILITY:  
PHYSICAL DURABILITY:  
PERFORMANCE SPECIFICATIONS:  
T(avg):>85% FROM 325 - 430 nm FOR RANDOM POLARIZATION @ 45° AOI  
T(abs): >80% FROM 325 - 430 nm FOR ALL POLARIZATION @ 45° AOI  
R(avg):>97% FROM 470 - 545 nm FOR RANDOM POLARIZATION @ 45° AOI  
R(abs): >95% FROM 470 - 545 nm FOR ALL POLARIZATION @ 45° AOI  
T(abs): = 50% 450nm @ 45° AOI  
  
S1: HARD COATED  
S2: SINGLE LAYER MgF2

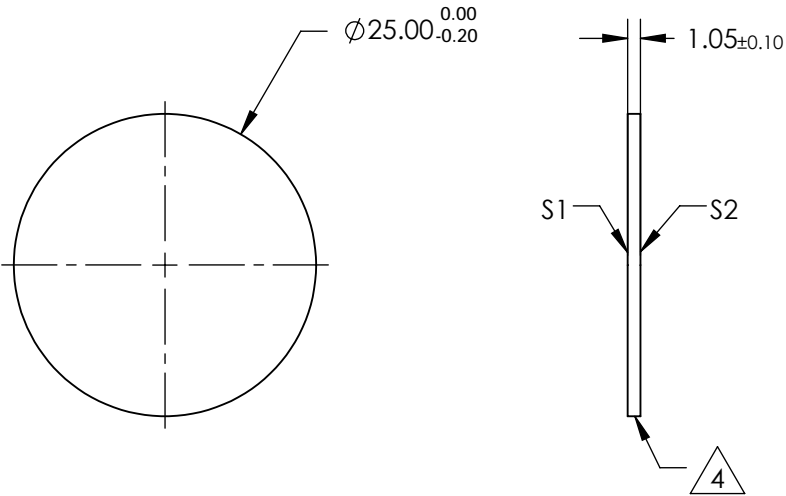
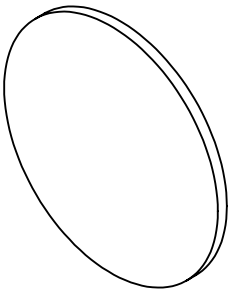
4. FINE GRIND SURFACE

5. POWER, IRREGULARITY, AND SURFACE QUALITY SPECIFICATIONS  
APPLY ACROSS CLEAR APERTURE
6. TRANSMITTED WAVEFRONT DISTORTION RMS@ 632.8nm  $\leq \frac{1}{4} \lambda$
7. ROHS COMPLIANT



SHORTPASS FILTER

**FOR INFORMATION ONLY:  
DO NOT MANUFACTURE  
PARTS TO THIS DRAWING**



SPECIFICATIONS SUBJECT TO CHANGE WITHOUT NOTICE  
DIMENSIONS ARE FOR REFERENCE ONLY

	S1	S2
SHAPE	PLANO	PLANO
SURFACE QUALITY	60-40	60-40
CLEAR APERTURE	Ø22.00	Ø22.00
BEVEL	PROTECTIVE AS NEEDED	PROTECTIVE AS NEEDED

THIRD ANGLE PROJECTION		Edmund Optics®	
TITLE		450nm, 25mm DIAMETER, DICHOIC SHORTPASS	
ALL DIMS IN	mm	DWG NO	69201
			SHEET 1 OF 1