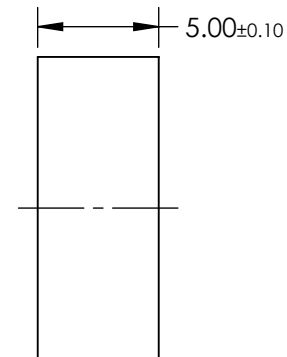
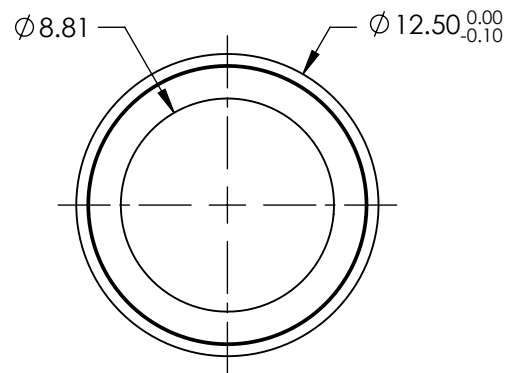
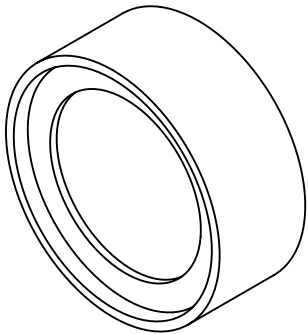


NOTES:


- 1. CONSTRUCTION: MOUNTED IN BLACK ANODIZED RING
- 2. COATING (APPLY ACROSS COATING APERTURE)  
  
DURABILITY: MIL-C-48497A  
PERFORMANCE SPECIFICATIONS:  
CWL: 785  
FWHM: 39.2  
REFLECTION %: >99  
TRANSMISSION %: >90
- 3. POWER, IRREGULARITY, AND SURFACE QUALITY SPECIFICATIONS  
APPLY ACROSS CLEAR APERTURE
- 4. TRANSMITTED WAVEFRONT DISTORTION RMS@ <1λ
- 5. ROHS COMPLIANT



**FOR INFORMATION ONLY:  
DO NOT MANUFACTURE  
PARTS TO THIS DRAWING**

SPECIFICATIONS SUBJECT TO CHANGE WITHOUT NOTICE  
DIMENSIONS ARE FOR REFERENCE ONLY



	S1	S2	THIRD ANGLE PROJECTION 		TITLE  OD4, Ø12.5mm, 785nm, NOTCH FILTER		
SHAPE	PLANO	PLANO					
SURFACE QUALITY	60-40	60-40					
CLEAR APERTURE	Ø8.81	Ø8.81	ALL DIMS IN	mm	DWG NO	67112	SHEET 1 OF 1