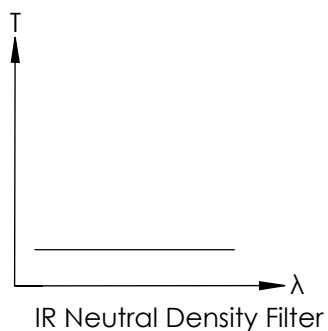
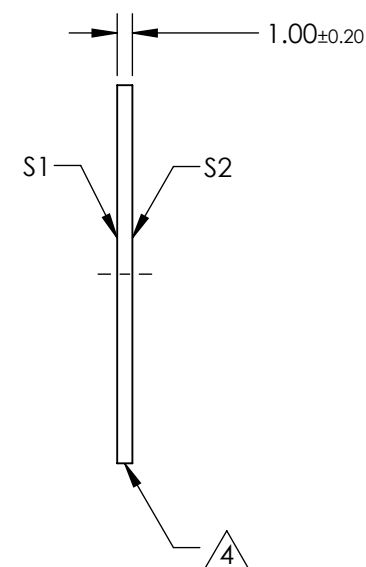
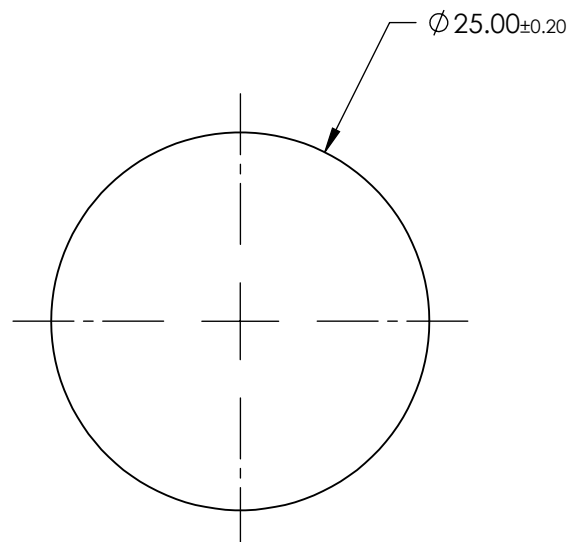
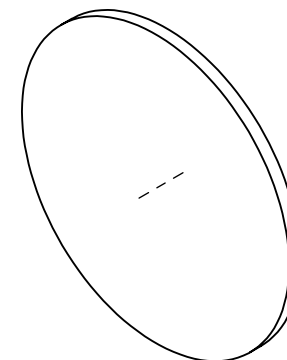


1. SUBSTRATE: Germanium (Ge)
2. SURFACE S2 TO BE PARALLEL WITH SURFACE S1 TO <10 ARCMIN
3. COATING (APPLY ACROSS CLEAR APERTURE)
OPTICAL DENSITY = 0.3 @ 2 - 14 μm
TRANSMISSION = 50.0 @ 2 - 14 μm
4. FINE GRIND SURFACE
5. POWER, IRREGULARITY, AND SURFACE QUALITY SPECIFICATIONS
APPLY ACROSS CLEAR APERTURE
6. ROHS COMPLIANT

**FOR INFORMATION ONLY:
DO NOT MANUFACTURE
PARTS TO THIS DRAWING**



SPECIFICATIONS SUBJECT TO CHANGE WITHOUT NOTICE
DIMENSIONS ARE FOR REFERENCE ONLY

	S1	S2
SHAPE	PLANO	PLANO
SURFACE FLATNESS	3 - 5λ	3 - 5λ
SURFACE QUALITY	80-50	80-50
CLEAR APERTURE	Ø 22.5	Ø 22.5
BEVEL	PROTECTED AS NEEDED	PROTECTED AS NEEDED



ALL DIMS IN	mm
-------------	----

 Edmund Optics®

TITL F

0.3 OD, 25mm Dia., IR Neutral Density Filter

DWG NO

64353

SHEET
20 OF 37