

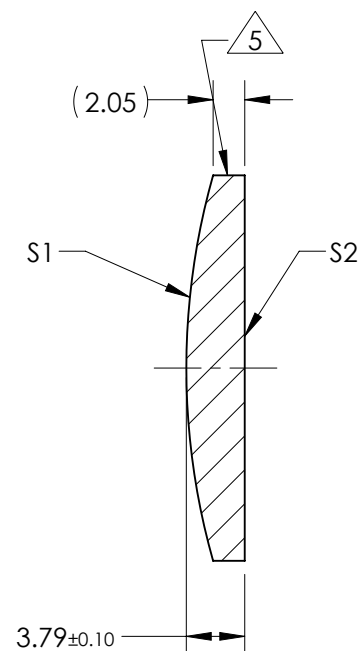
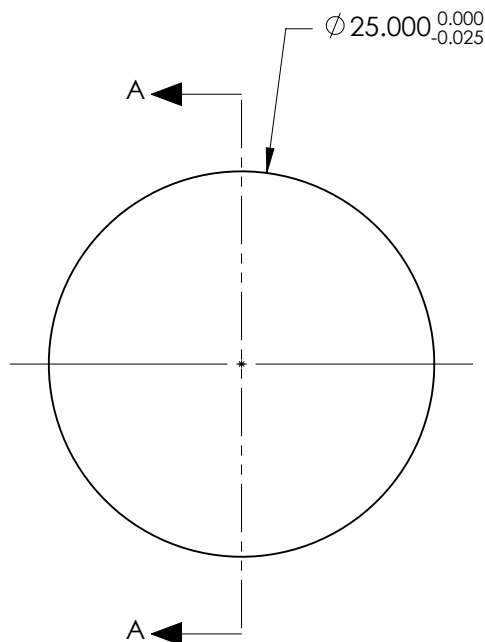
NOTES:

1. SUBSTRATE:
CORNING: FUSED SILICA 458/678
2. ROHS COMPLIANT
3. CENTERING TOLERANCE (AT 587.6nm):
BEAM DEVIATION (HALF ANGLE): <1 ARCMIN
4. COATING (APPLY ACROSS COATING APERTURE)

S1 & S2: 266nm High Power V-Coat
R(ABS) ≤ 0.25% @ 266nm @ 0° AOI

DAMAGE THRESHOLD
PULSED: 3J/cm² @ 20ns, 20Hz @ 266nm

5. FINE GRIND SURFACE
6. POWER, IRREGULARITY, AND SURFACE QUALITY SPECIFICATIONS APPLY ACROSS CLEAR APERTURE
7. FOCAL LENGTH (EFL): 100.00mm ±1%
BACK FOCAL LENGTH (BFL): 97.40mm
8. PROTECTIVE BEVEL AS NEEDED
9. DESIGN WAVELENGTH: 587.6nm



SECTION A-A

***FOR INFORMATION ONLY:
DO NOT MANUFACTURE
PARTS TO THIS DRAWING***

| | S1 | S2 |
|-------------------------|------------|------------|
| SHAPE | CONVEX | PLANO |
| RADIUS | 45.85 | INFINITY |
| SURFACE QUALITY | 20 - 10 | 20 - 10 |
| MIN CLEAR APERTURE | Ø 22.50 | Ø 22.50 |
| MIN COATING APERTURE | Ø 22.50 | Ø 22.50 |
| POWER AT 632.8nm | 2.00 RINGS | 2.00 RINGS |
| IRREGULARITY AT 632.8nm | 0.20 RINGS | 0.20 RINGS |

SPECIFICATIONS SUBJECT TO CHANGE WITHOUT NOTICE
DIMENSIONS ARE FOR REFERENCE ONLY

EO® **Edmund Optics**®

| | | | | |
|------------------------|----|--------|--|--------------|
| THIRD ANGLE PROJECTION | | TITLE | 25mm Diameter x 100mm FL, 266nm Coated, Laser Grade PCX Lens | |
| ALL DIMS IN | mm | DWG NO | 67946 | SHEET 1 OF 1 |