

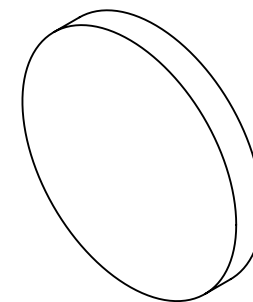
NOTES:

1. SUBSTRATE  
UV GRADE FUSED SILICA
2. SURFACE S2 TO BE PARALLEL WITH SURFACE S1 TO WITHIN 5 ARCSEC
3. COATING (APPLY ACROSS COATING APERTURE)

PERFORMANCE SPECIFICATIONS @ 0° AOI  
T(AVG): >85% FROM 880 - 2000nm  
T(AVG): < 1% FROM 635 - 805nm  
T(ABS): = 50% @ 850nm

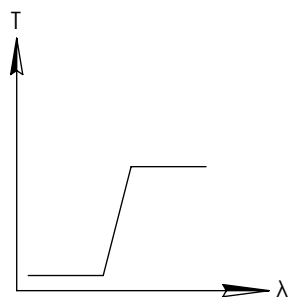
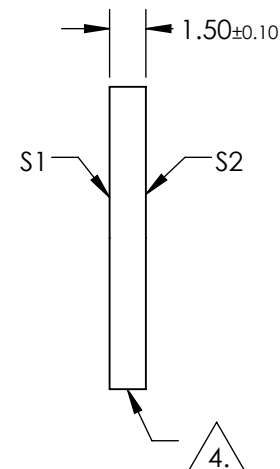
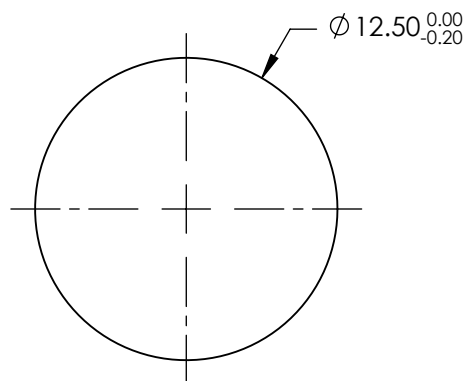
S1: MULTILAYER DIELECTRIC COATING  
S2: SINGLE LAYER MgF2

**FOR INFORMATION ONLY:  
DO NOT MANUFACTURE  
PARTS TO THIS DRAWING**



4. FINE GRIND SURFACE

5. TRANSMITTED WAVEFRONT DISTORTION RMS@ 632.8nm ≤ ¼ WAVE
6. ROHS COMPLIANT

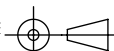


LONGPASS FILTER

SPECIFICATIONS SUBJECT TO CHANGE WITHOUT NOTICE  
DIMENSIONS ARE FOR REFERENCE ONLY

|                  | S1                   | S2                   |
|------------------|----------------------|----------------------|
| SHAPE            | PLANO                | PLANO                |
| SURFACE QUALITY  | 40-20                | 40-20                |
| CLEAR APERTURE   | 80%                  | 80%                  |
| COATING APERTURE | Ø11.00               | Ø11.00               |
| BEVEL            | PROTECTIVE AS NEEDED | PROTECTIVE AS NEEDED |

THIRD ANGLE  
PROJECTION



ALL DIMS IN

mm

**Edmund Optics®**

TITLE

OD2, Ø12.5mm, 850nm LONGPASS FILTER

DWG NO

49033

SHEET  
1 OF 1