

**FOR INFORMATION ONLY:
DO NOT MANUFACTURE
PARTS TO THIS DRAWING**

NOTES:

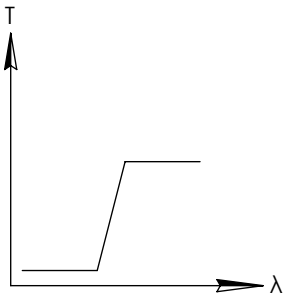
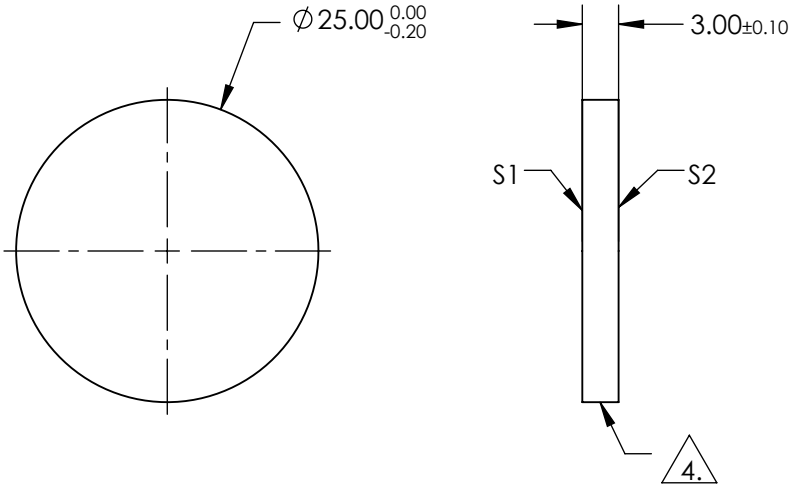
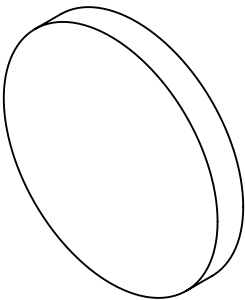
1. SUBSTRATE
UV GRADE FUSED SILICA
2. SURFACE S2 TO BE PARALLEL WITH SURFACE S1 TO WITHIN 5 ARCSEC
3. COATING (APPLY ACROSS COATING APERTURE)

PERFORMANCE SPECIFICATIONS @ 0° AOI
T(AVG): >85% FROM 1035 - 2000nm
T(AVG): < 1% FROM 750 - 950nm
T(ABS): = 50% @ 1000nm

S1: MULTILAYER DIELECTRIC COATING
S2: SINGLE LAYER MgF2

4. FINE GRIND SURFACE

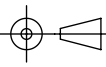

5. TRANSMITTED WAVEFRONT DISTORTION RMS@ 632.8nm ≤ ¼ WAVE
6. ROHS COMPLIANT



LONGPASS FILTER

SPECIFICATIONS SUBJECT TO CHANGE WITHOUT NOTICE
DIMENSIONS ARE FOR REFERENCE ONLY

| | S1 | S2 |
|------------------|----------------------|----------------------|
| SHAPE | PLANO | PLANO |
| SURFACE QUALITY | 40-20 | 40-20 |
| CLEAR APERTURE | 80% | 80% |
| COATING APERTURE | Ø20.00 | Ø20.00 |
| BEVEL | PROTECTIVE AS NEEDED | PROTECTIVE AS NEEDED |

| | | | |
|--|----|---|-----------------|
| THIRD ANGLE PROJECTION  | |  | |
| TITLE | | OD2, Ø25mm, 1000nm LONGPASS FILTER | |
| ALL DIMS IN | mm | DWG NO | 48563 |
| | | | SHEET 1 OF 1 |