

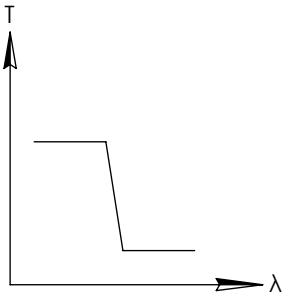
NOTES:

- 1. SUBSTRATE
- 2. SURFACE S2 TO BE PARALLEL WITH SURFACE S1 TO WITHIN ± 3 arcsec
- 3. COATING (APPLY ACROSS COATING APERTURE)
DURABILITY:
PERFORMANCE SPECIFICATIONS:
T(avg): >85% @ AOI 0° FROM 465 - 940nm
T(avg): <1% @ AOI 0° FROM 1085 - 1305nm
T(avg): =50% FOR AOI 0° @ 1000nm \pm 2%

S2: SINGLE LAYER MgF2

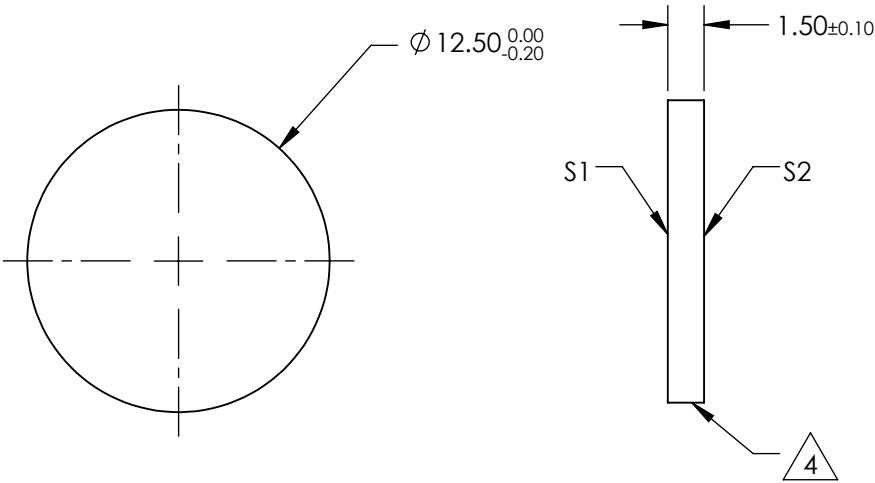
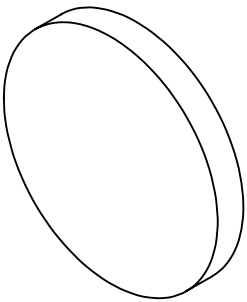
4. FINE GRIND SURFACE

- 5. POWER, IRREGULARITY, AND SURFACE QUALITY SPECIFICATIONS
APPLY ACROSS CLEAR APERTURE
- 6. TRANSMITTED WAVEFRONT DISTORTION P-V @ 632.8nm 1/10 λ
- 7. ROHS COMPLIANT




SHORTPASS FILTER

**FOR INFORMATION ONLY:
DO NOT MANUFACTURE
PARTS TO THIS DRAWING**

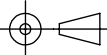


SPECIFICATIONS SUBJECT TO CHANGE WITHOUT NOTICE
DIMENSIONS ARE FOR REFERENCE ONLY

Rev. A	S1	S2
SHAPE	PLANO	PLANO
SURFACE QUALITY	40-20	40-20
CLEAR APERTURE	Ø10	Ø10
BEVEL	PROTECTIVE AS NEEDED	PROTECTIVE AS NEEDED



THIRD ANGLE
PROJECTION



ALL DIMS IN

mm

TITLE

OD2, Ø12.5mm, 1000nm, SHORTPASS FILTER

DWG NO

47822

SHEET

1 OF 1