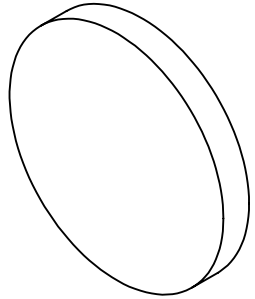


NOTES:

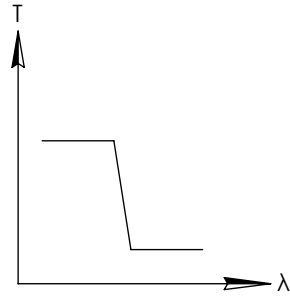
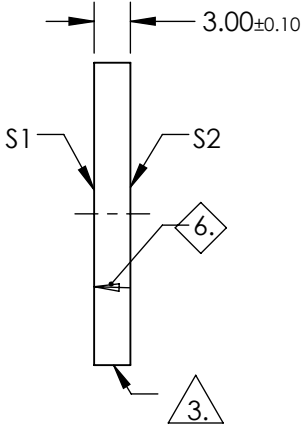
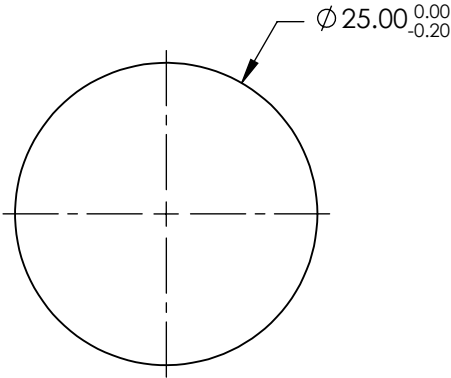
1. SUBSTRATE: UV GRADE FUSED SILICA
 2. COATING (APPLY ACROSS COATING APERTURE)
- DURABILITY: MIL-C-48497A, SECT. 3.4.1

PERFORMANCE SPECIFICATIONS @ 0° AOI
T(AVG): ≥91% FROM 510 - 1085nm
T(AVG): ≤ 0.01% FROM 1140 - 1530nm
CUT-OFF SLOPE: <1%
CUT-OFF WAVELENGTH: 1100nm ± 1%

**FOR INFORMATION ONLY:
DO NOT MANUFACTURE
PARTS TO THIS DRAWING**



3. FINE GRIND SURFACE
4. TRANSMITTED WAVEFRONT DISTORTION RMS @ ≤λ/4 (prior to coating)
5. ROHS COMPLIANT
6. ARROW POINTS TOWARDS THE FILTER COATED SURFACE



SHORTPASS FILTER

SPECIFICATIONS SUBJECT TO CHANGE WITHOUT NOTICE
DIMENSIONS ARE FOR REFERENCE ONLY

	S1	S2
SHAPE	PLANO	PLANO
SURFACE QUALITY	60-40	60-40
CLEAR APERTURE	>80%	>80%
BEVEL	PROTECTIVE AS NEEDED	PROTECTIVE AS NEEDED

THIRD ANGLE PROJECTION		Edmund Optics®	
ALL DIMS IN mm		TITLE	1100nm 25mm Diameter, OD 4 Shortpass Filter
DWG NO		64339	SHEET 1 OF 1