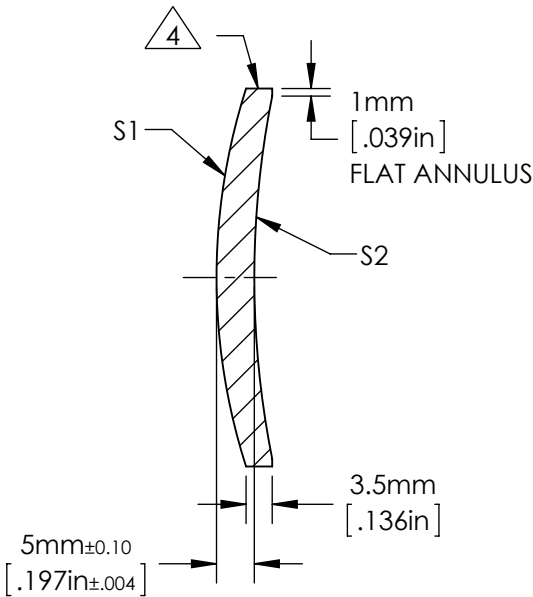
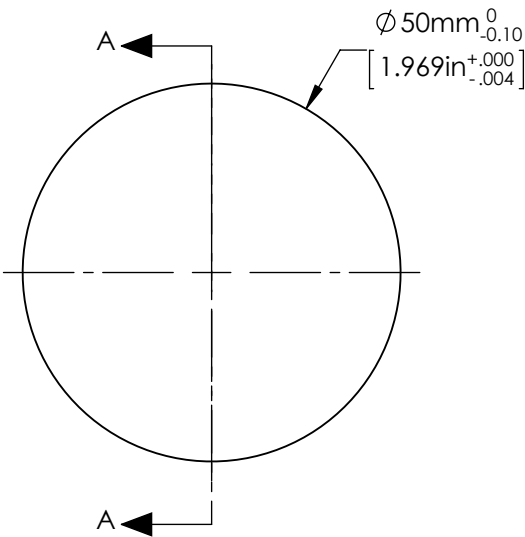


NOTES:

- 1. ALLOWABLE OPTICAL MATERIAL:
OPTICAL GRADE GERMANIUM
- 2. CENTERING TOLERANCE (AT 587.6nm):
BEAM DEVIATION: <3 ARCMINUTES
- 3. COATING (APPLY ACROSS COATING APERTURE)
S1 & S2: T(AVG) > 94% FROM 3.0-5.0µm
R(AVG) <1.0% FROM 3.0-5.0µm

4. EDGES DIAMOND TURNED



SECTION A-A

FOR INFORMATION ONLY:
DO NOT MANUFACTURE PARTS TO THIS DRAWING

	S1	S2				
SHAPE	CONVEX	CONCAVE	EFL (AT 10.6µm)	(75.00)	<div> Edmund Optics®</div>	
RADIUS	81.89	122.77	BFL (AT 10.6µm)	(71.56)		
SURFACE QUALITY	60 - 40	60 - 40	ALL DIMS IN	mm	TITLE	ø50mm x 75mm FL, 3-5µm COATED GERMANIUM MENISCUS LENS
CLEAR APERTURE	≥ ø45.00	≥ ø45.00			DWG NO	87965
BEVEL MAX FACE	0.3mm x 45°	0.3mm x 45°				