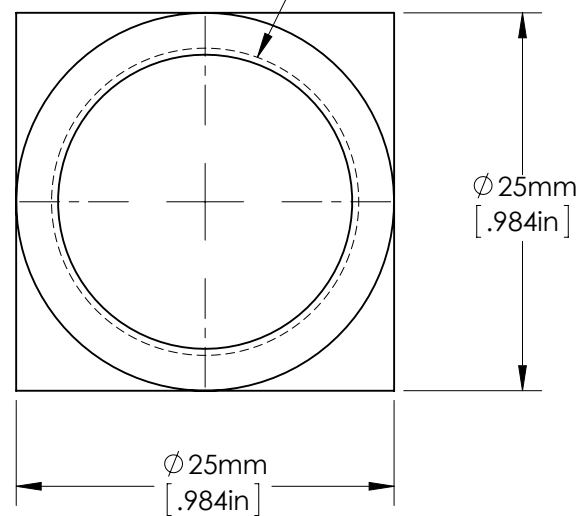
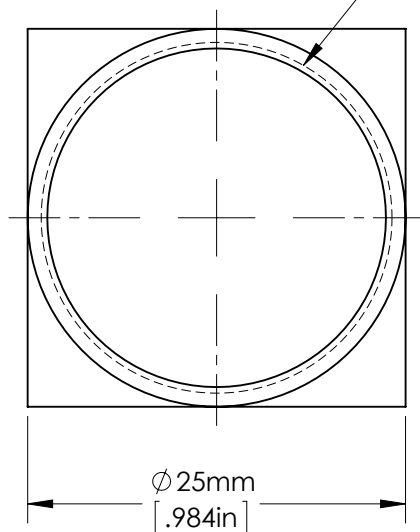


8X R17.7

M23.2 x 0.75
THRU ONE WALL
ONE ON THIS FACE
ONE ON OPPOSITE FACE

RMS THREAD
THRU ONE WALL
ON 4 FACES



SPECIFICATIONS SUBJECT TO CHANGE WITHOUT NOTICE
DIMENSIONS ARE FOR REFERENCE ONLY
DIMENSIONS ARE IN mm [INCHES]



Edmund Optics®

TITLE	Compact System Tube Sphere (2) M23.2 Ports, (4) RMS Ports					
DWG NO	85515	MATERIAL	BLACK ANODIZED ALUMINUM	SHEET 1 OF 1	REV	000