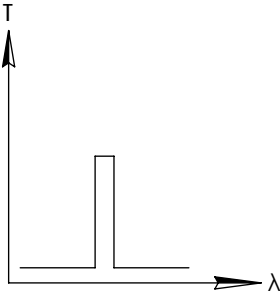
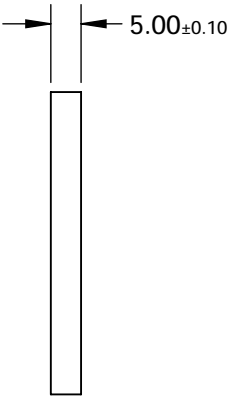
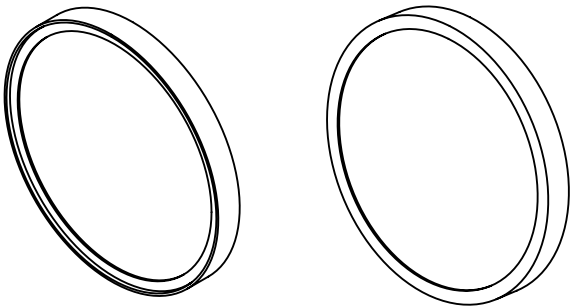
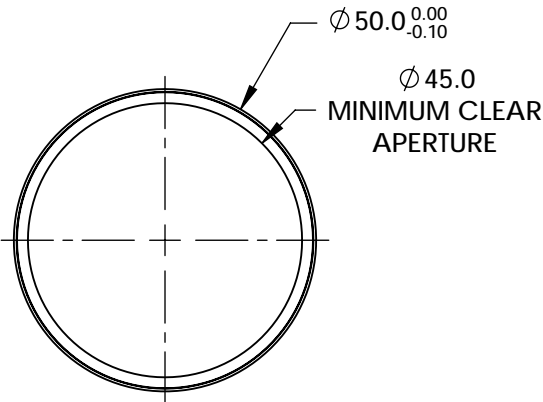


FOR INFORMATION ONLY:  
DO NOT MANUFACTURE  
PARTS TO THIS DRAWING



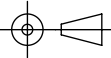
BANDPASS FILTER



| REV. 001                   | VALUE                                   |
|----------------------------|---|
| CENTER WAVELENGTH (CWL)    | 676 ± 2nm                               |
| FULL WIDTH HALF MAX (FWHM) | 10 ± 2nm                                |
| MINIMUM TRANSMISSION       | ≥85 %                                   |
| BLOCKING                   | 200 - 1200nm                            |
| SURFACE QUALITY            | 80-50                                   |
| CONSTRUCTION               | MOUNTED IN BLACK ANODIZED ALUMINUM RING |
| COATING TYPE               | HARD COATED                             |
| DURABILITY                 | MIL-C-48497A, SECT. 3.4.1               |
| ENVIRONMENTAL              | MIL-STD-801F, SECT. 507.4               |

SPECIFICATIONS SUBJECT TO CHANGE WITHOUT NOTICE  
DIMENSIONS ARE FOR REFERENCE ONLY

 Edmund Optics®

|  |    |        |   |              |
|--|----|--------|---|--------------|
| THIRD ANGLE PROJECTION  |    | TITLE  | OD4, Ø50mm, 676nm x 10nm, HC, BP FILTER |              |
| ALL DIMS IN  | mm | DWG NO | 65234                                   | SHEET 1 OF 1 |