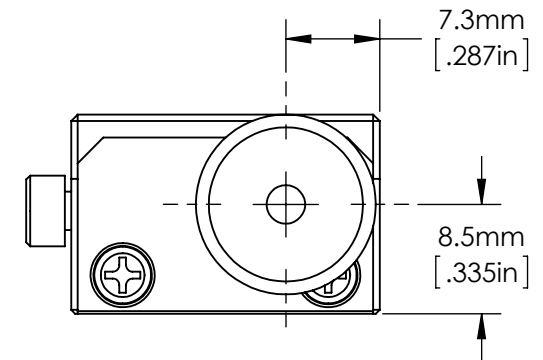
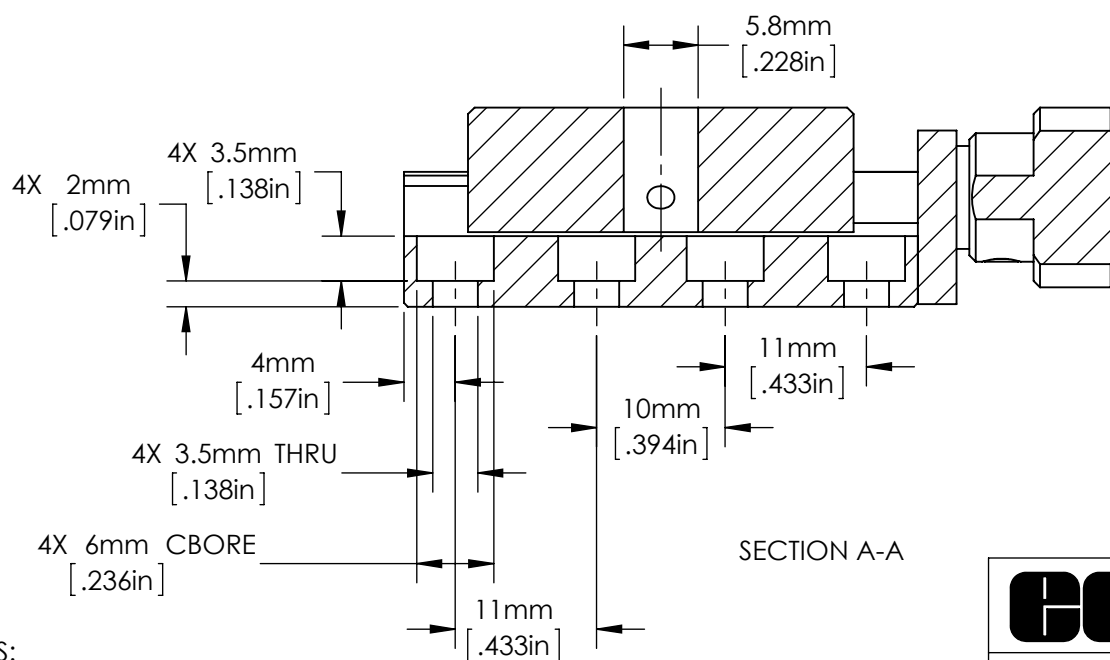
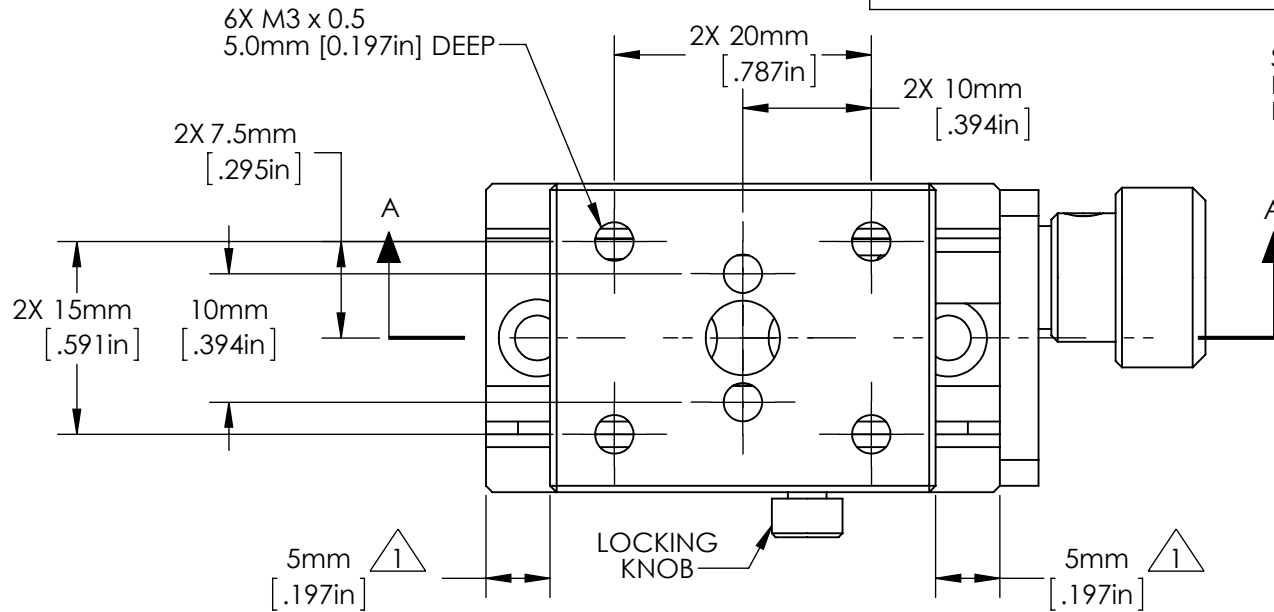


FOR INFORMATION ONLY:
DO NOT MANUFACTURE PARTS TO THIS DRAWING

SPECIFICATIONS SUBJECT TO CHANGE WITHOUT NOTICE
 DIMENSIONS ARE FOR REFERENCE ONLY
 DIMENSIONS ARE IN mm [INCHES]

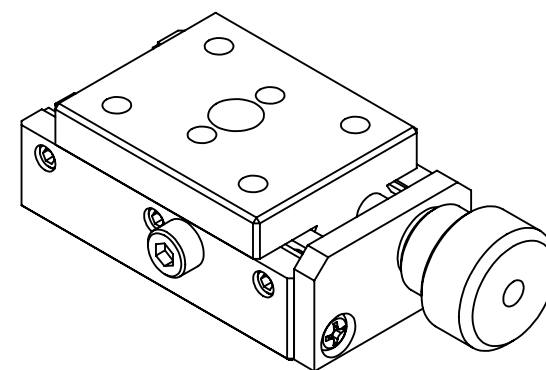
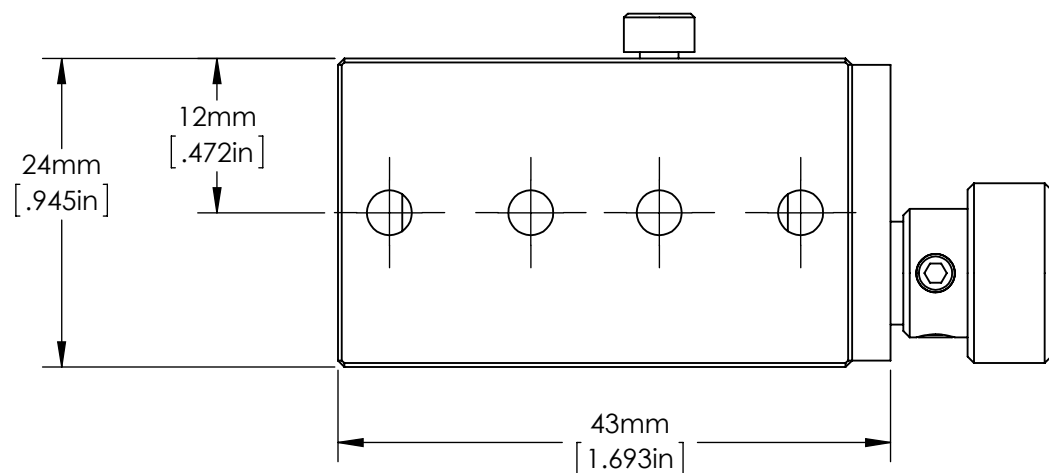
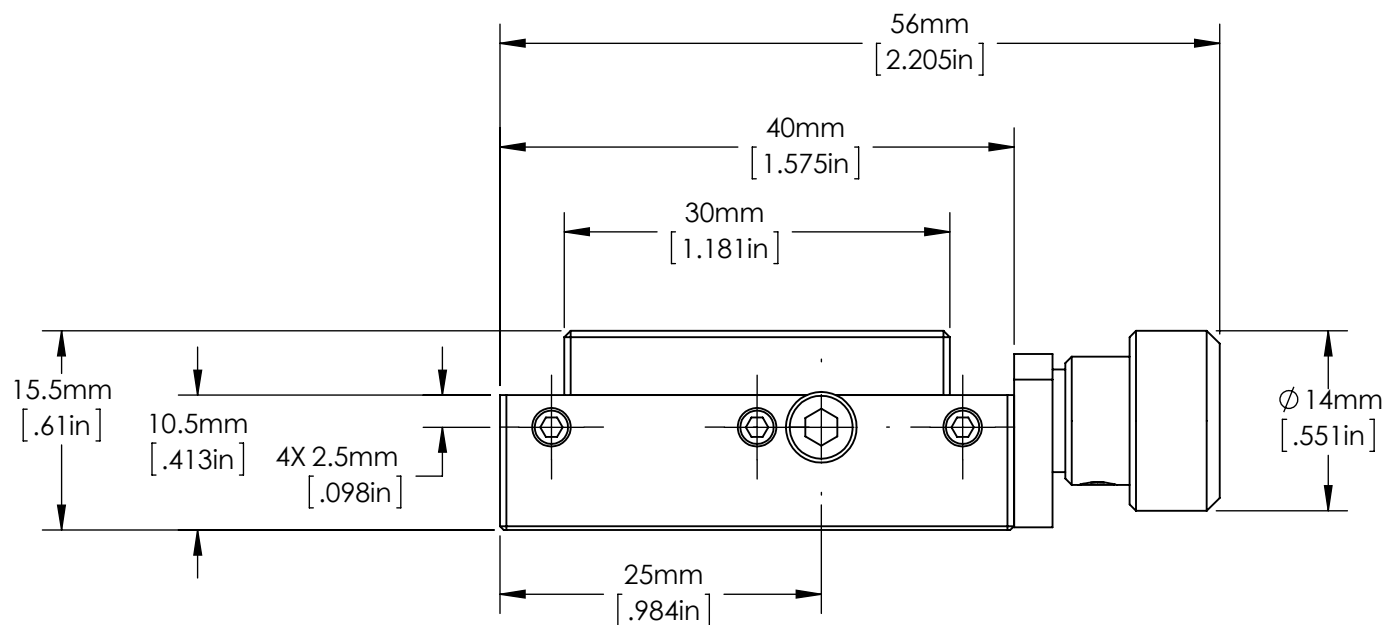


NOTES:

1. TOTAL TRAVEL: 10mm
2. INCLUDES ONE PACKAGE OF (2) M3 x 6mm LONG, FLAT POINT SET SCREWS FOR LOCKING

Edmund Optics®

TITLE	Small X Axis Leadscrew Drive			
DWG NO	55017	MATERIAL	BLACK ANODIZED ALUMINUM	SHEET 1 OF 2



SPECIFICATIONS SUBJECT TO CHANGE WITHOUT NOTICE
 DIMENSIONS ARE FOR REFERENCE ONLY
 DIMENSIONS ARE IN mm [INCHES]

FOR INFORMATION ONLY:
DO NOT MANUFACTURE PARTS TO THIS DRAWING

EO[®] Edmund Optics[®]

TITLE	Small X Axis Leadscrew Drive			
DWG NO	55017	MATERIAL	BLACK ANODIZED ALUMINUM	SHEET 2 OF 2