

NOTES:

1. ALLOWABLE OPTICAL MATERIAL:

Fused Silica

2. SURFACE S2 TO BE PARALLEL WITH SURFACE S1 TO <3 ARCMIN

3. COATING (APPLY ACROSS CLEAR APERTURE)

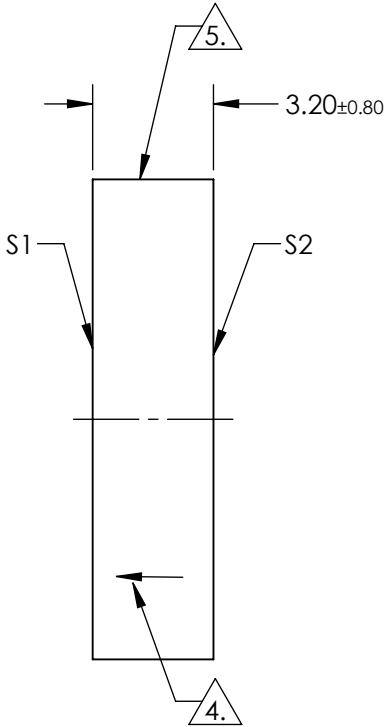
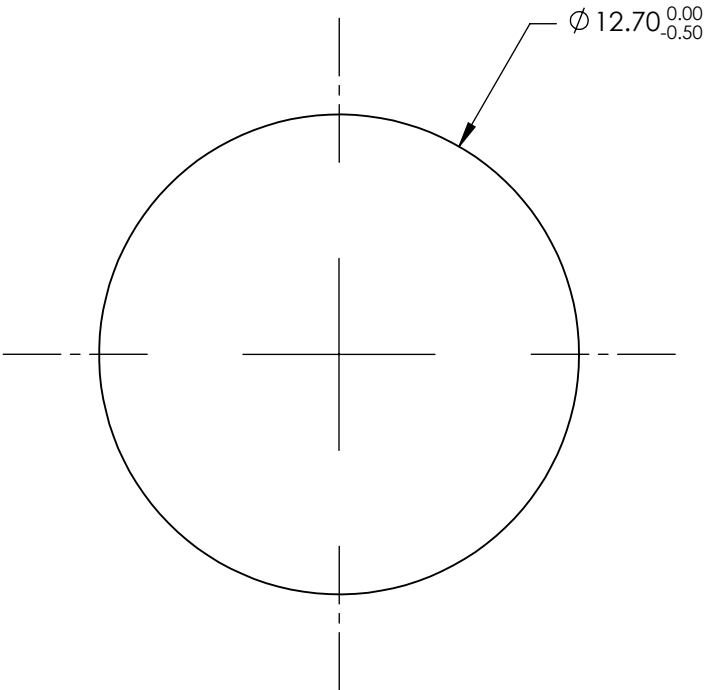
S1: R(AVG) >85% @ 400 - 700nm

R(AVG) >90% @ 400 - 2000nm

S2: NONE


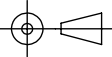
4. ARROW ON EDGE POINTING TOWARD SURFACE S1.

5. FINE GROUND SURFACE



**FOR INFORMATION ONLY:  
DO NOT MANUFACTURE  
PARTS TO THIS DRAWING**

SPECIFICATIONS SUBJECT TO CHANGE WITHOUT NOTICE  
DIMENSIONS ARE FOR REFERENCE ONLY

	S1	S2	 Edmund Optics®			
SHAPE	PLANO	PLANO				
SURFACE ACCURACY AT 632.8	1/10 WAVE	NA				
SURFACE QUALITY	60-40	COMMERCIAL POLISH	ALL DIMS IN	mm	TITLE	0.5" Dia. Protected Aluminum, λ/10 Flat Fused Silica
CLEAR APERTURE	Ø 11.43	Ø 11.43			DWG NO	43-319-522
BEVEL MAX FACE	0.5 x 45°	0.5 x 45°				SHEET 1 OF 1