

LightPath 354260 | 1310nm Alignment, 0.16 NA Fiber Collimator w/ FC/PC Connector

#47-226



Fiber Optic Collimator and Focuser Assemblies

LightPath® Fiber Optic Collimators는 광섬유에서 출사하는 빛을 원하는 빔 직경 또는 스폿 크기로 시준하거나 역으로 사용 시 광섬유로 입사하는 빛의 초점을 맞추도록 설계되었습니다. 이 렌즈는 회절 한계 성능을 갖고 있어 스폿 크기를 최소 수 미크론까지 달성할 수 있습니다. 또한 무반사(AR) 코팅 처리가 되어 후방 반사가 적게 일어납니다. LightPath® Fiber Optic Collimators는 광학 기기의 입사 및 출사 빛을 한 쌍(pair)으로 결합하여 사용할 수 있도록 설계되었습니다. 제조 현장에서 렌즈 정렬 시 정밀 세팅 및 테스트 과정을 거쳐 장기간 사용에도 최적의 성능이 보장됩니다. 주요 용도로는 통신, 데이터 전송을 비롯해 광섬유 결합 레이저 및 소형 콘센트와의 사용이 있습니다.

General

| | |
|----------------------|-------------------------|
| Lightpath Lens Code: | 354260 |
| Type: | Fiber Collimator |
| Lens Included: | #37-100 |

Physical & Mechanical Properties

| | |
|-------------------------|------------------------------|
| Clear Aperture CA (mm): | 5.00 |
| Bevel: | Protective bevel as needed |
| Construction: | 304L Stainless Steel Housing |
| Housing Diameter (mm): | 11.00 |
| Housing Length (mm): | 20.2 |

Optical Properties

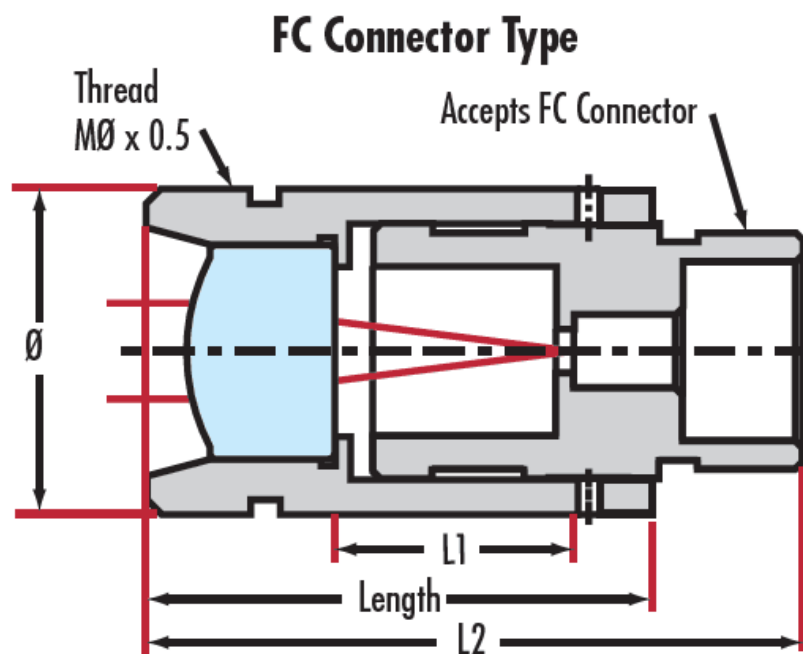
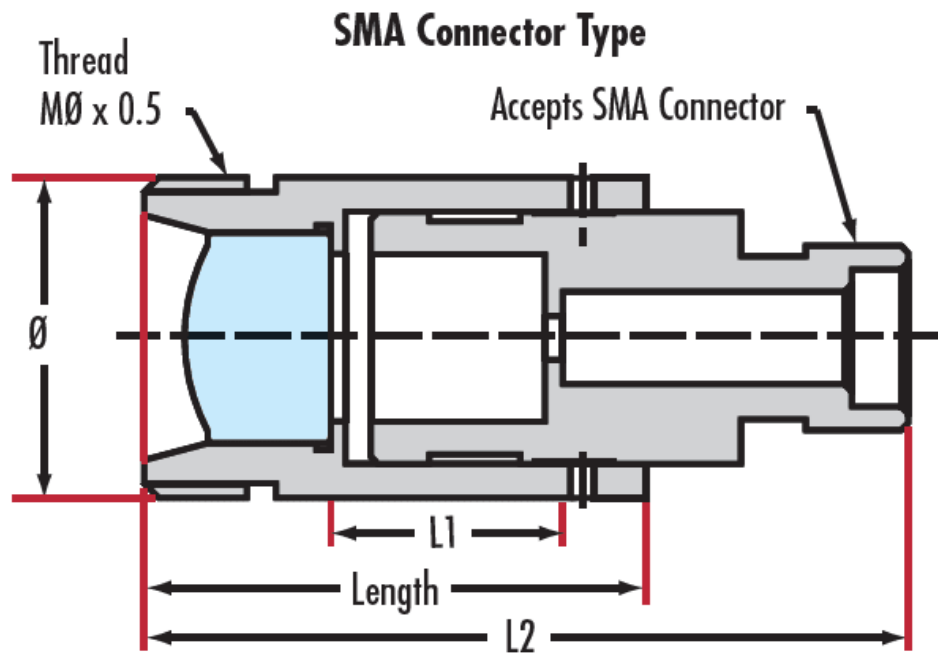
| | |
|---|--|
| Effective Focal Length EFL (mm): | 15.29 @ 780nm |
| Numerical Aperture NA: | 0.16 |
| Substrate: | D-ZK3 |
| Coating: | BBAR (1050-1600nm) |
| Coating Specification: | $R_{\text{abs}} < 1.0\%$ @ 1050 - 1600nm |
| Surface Quality: | 40-20 |
| f/#: | 3.13 |
| Wavelength Range (nm): | 1050 - 1600 |
| Conjugate Distance: | Infinite |
| Alignment Wavelength (nm): | 1310 |
| Transmitted Wavefront Error (λ , RMS): | < 0.090 |

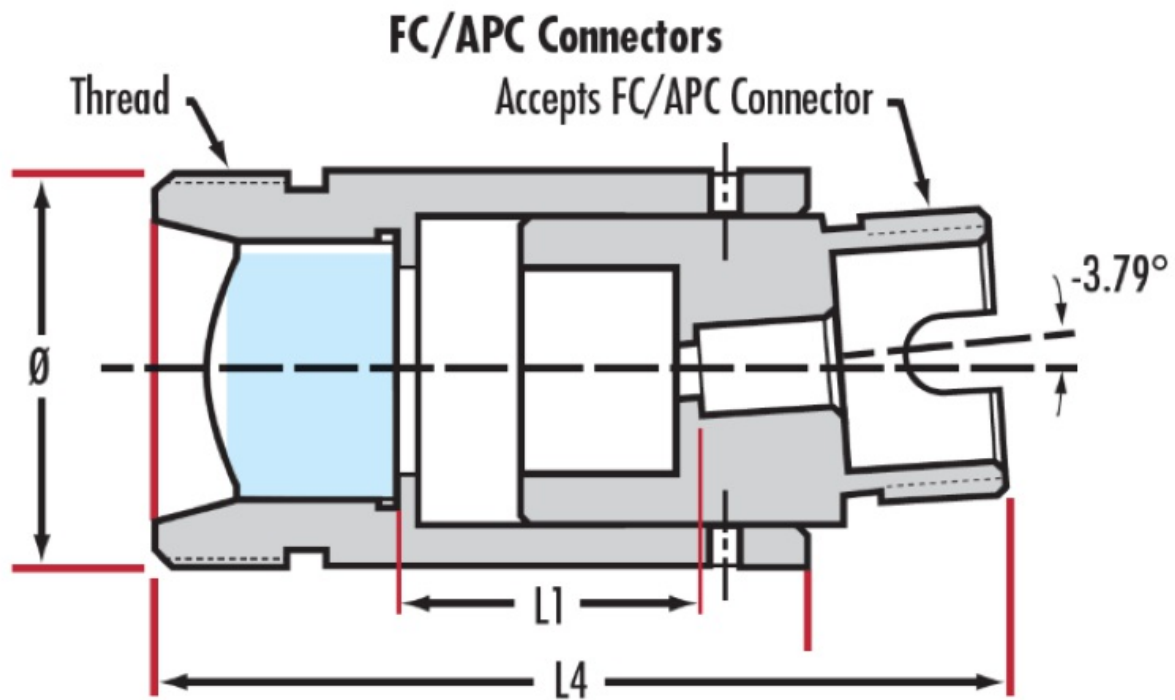
Hardware & Interface Connectivity

| | |
|------------|-------|
| Connector: | FC/PC |
|------------|-------|

Threading & Mounting

| | |
|--------|-----------|
| Mount: | M11 x 0.5 |
|--------|-----------|







June 22, 2025

To Whom It May Concern,

This document certifies that the product stated below has been reviewed as requested by Edmund Optics:

| 재고 번호 | 제품설명 |
|--------|--|
| 47-226 | LightPath 354260 1310nm Alignment, 0.16 NA Fiber Collimator w/ FC/PC Connector |

This item is EU RoHS (2015/863/EU) compliant without the use of exemptions.

This certification means that:

- EO's suppliers have confirmed the material composition of this product.
- EO has implemented rigorous procedures to document this compliance.
- The information provided may, or may not, be based upon actual test data, or on information from our Vendors, Raw Material Suppliers or Subcontractors.



Jay Budd, Director of Corporate Compliance
June 22, 2025

Edmund Optics Inc. - 101 E Gloucester Pike, Barrington, NJ 08007 | 1-800-363-1992 | Compliance@edmundoptics.com

June 22, 2025

| 재고 번호 | 제품설명 |
|--------|--|
| 47-226 | LightPath 354260 1310nm Alignment, 0.16 NA Fiber Collimator w/ FC/PC Connector |

Edmund Optics certifies that all articles included in this shipment are in compliance with the terms and conditions of this order. The company also certifies that the articles included in this shipment are in accordance to all agreed upon specifications and quality assurance provisions. Please call 1-800-363-1992 should any questions arise from this shipment.



Jeff Harvey- EVP of Operations



June 22, 2025

To Whom It May Concern,

This document certifies that the product stated below has been reviewed as requested by Edmund Optics:

| 재고 번호 | 제품설명 |
|--------|--|
| 47-226 | LightPath 354260 1310nm Alignment, 0.16 NA Fiber Collimator w/ FC/PC Connector |

This item does not contain any of the substances listed on the Reach SVHC list as of 17 January 2023 in quantities exceeding 0.1% weight by weight.

Please note the following:

- Entry 11 of Annex V of the REACH regulation EC 1907/2006 as amended by regulation 987/2008, exempts "non-hazardous" glass components from registration.
- Items considered to be packing materials and which do not form part of, or are not required for the operation of, the product, are not considered to be within scope of this declaration.
- EO does not routinely analyze products for substances not purposely added or specified within the design specifications, drawings and assembly procedures.

This certification means that:

- EO's suppliers have confirmed the material composition of this product.
- EO has implemented rigorous procedures to document this compliance.
- The information provided may, or may not, be based upon actual test data, or on information from our Vendors, Raw Material Suppliers or Subcontractors.

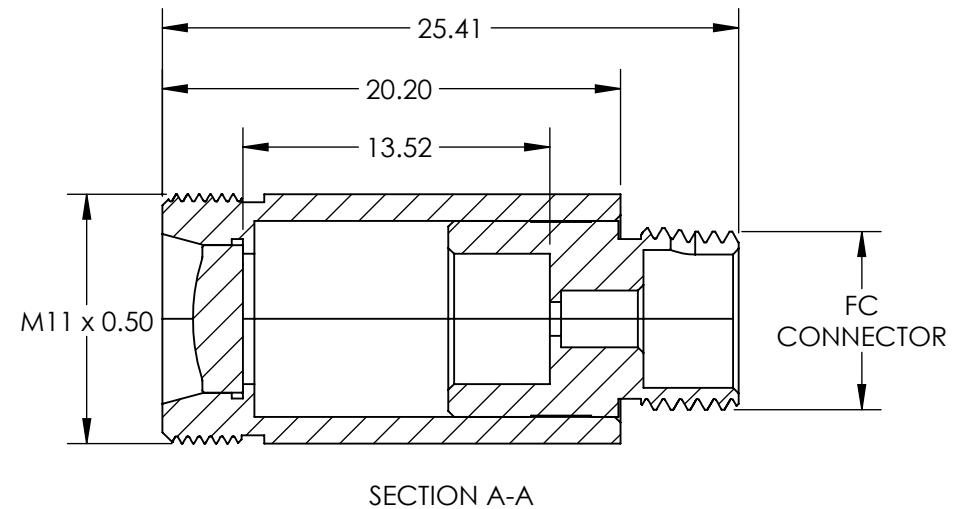
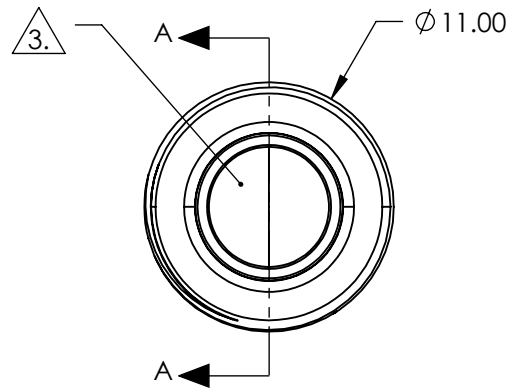
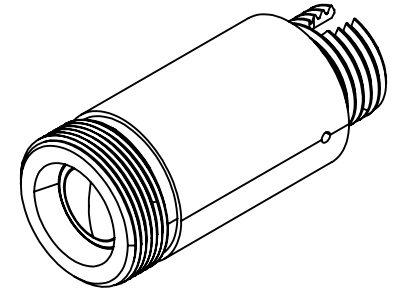


Jay Budd, Director of Corporate Compliance
June 22, 2025

Edmund Optics Inc. - 101 E Gloucester Pike, Barrington, NJ 08007 | 1-800-363-1992 | Compliance@edmundoptics.com

NOTES:

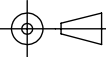
1. MATERIAL:
HOUSING: STAINLESS STEEL
LENS: D-ZK3
2. COATING (APPLY ACROSS CLEAR APERTURE)
R(AVG) <0.4% @ 1050 - 1600nm
3. CLEAR APERTURE: 5.00 mm
4. RoHS: COMPLIANT



SPECIFICATIONS SUBJECT TO CHANGE WITHOUT NOTICE
DIMENSIONS ARE FOR REFERENCE ONLY

**FOR INFORMATION ONLY:
DO NOT MANUFACTURE
PARTS TO THIS DRAWING**

Edmund Optics®

| | | | |
|---|-------|---|-----------------|
| THIRD ANGLE PROJECTION  | TITLE | 1310nm Alignment, 0.16 NA Fiber Collimator w/ FC Connector | |
| ALL DIMS IN | mm | DWG NO | SHEET 1 OF 1 |

47226