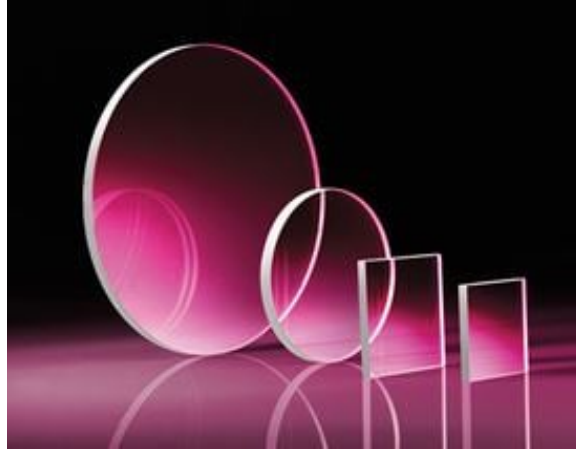


TECHSPEC® 40mm Diameter, Uncoated, B270 Window

#45-643



해당 제품은 VIS-NIR 스펙트럼에서 투과율이 높습니다. N-BK7 윈도우와 굴절률은 비슷하지만 가격은 더 저렴합니다. 해당 제품은 높은 태양열 안정성과 화학적 내성 덕분에 보호용 요소로 자주 사용되며 표준 윈도우 어플리케이션에 적합합니다. 코팅 옵션으로는 비코팅, MgF_2 코팅, VIS-NIR 무반사(AR) 코팅이 제공됩니다. 원형/정사각형 제품 모두 다양한 크기로 제공되며, OEM 어플리케이션의 경우 맞춤형 크기 및 코팅 처리가 가능합니다.

General

Type: Protective Window

Physical & Mechanical Properties

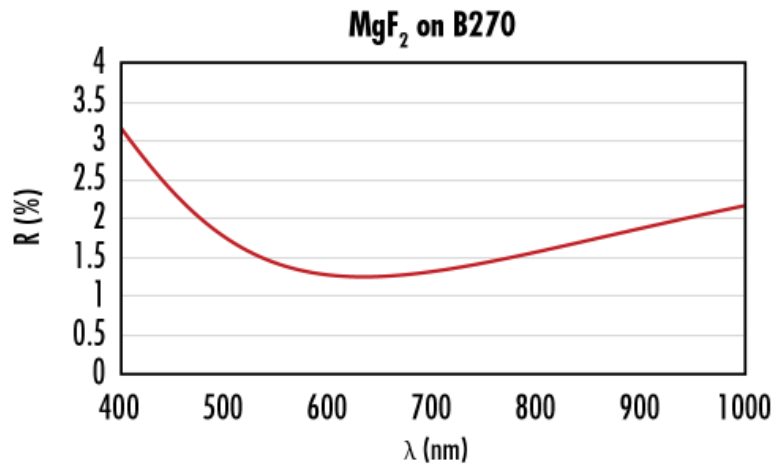
Bevel:	Protective as needed
Clear Aperture CA (mm):	38.00
Diameter (mm):	40.00 ±0.25
Thickness (mm):	3.00
Edges:	Fine Ground
Knoop Hardness (kg/mm ²):	500
Poisson's Ratio:	0.22
Young's Modulus (GPa):	71.5

Optical Properties

Abbe Number (v_d):	58.3
Coating:	Uncoated
Index of Refraction (n_d):	1.523
Substrate:	B270
Surface Flatness (P-V):	1 λ
Surface Quality:	60-40
Wavelength Range (nm):	360 - 2700

Material Properties

Coefficient of Thermal Expansion CTE (10 ⁻⁶ /°C):	9.4 (+20 to +300°C)
Density (g/cm ³):	2.56



June 20, 2025

To Whom It May Concern,

This document certifies that the product stated below has been reviewed as requested by Edmund Optics:

재고 번호	제품 설명
45-643	40mm Diameter, Uncoated, B270 Window

This item is EU RoHS (2015/863/EU) compliant without the use of exemptions.

This certification means that:

- EO's suppliers have confirmed the material composition of this product.
- EO has implemented rigorous procedures to document this compliance.
- The information provided may, or may not, be based upon actual test data, or on information from our Vendors, Raw Material Suppliers or Subcontractors.



Jay Budd, Director of Corporate Compliance
 June 20, 2025

Edmund Optics Inc. - 101 E Gloucester Pike, Barrington, NJ 08007 | 1-800-363-1992 | Compliance@edmundoptics.com



June 20, 2025

재고 번호

45-643

제품설명

40mm Diameter, Uncoated, B270 Window

Edmund Optics certifies that all articles included in this shipment are in compliance with the terms and conditions of this order. The company also certifies that the articles included in this shipment are in accordance to all agreed upon specifications and quality assurance provisions. Please call 1-800-363-1992 should any questions arise from this shipment.



Jeff Harvey- EVP of Operations



June 20, 2025

To Whom It May Concern,

This document certifies that the product stated below has been reviewed as requested by Edmund Optics:

재고 번호	제품설명
45-643	40mm Diameter, Uncoated, B270 Window

This item does not contain any of the substances listed on the Reach SVHC list as of 21 January 2025 in quantities exceeding 0.1% weight by weight.

Please note the following:

- Entry 11 of Annex V of the REACH regulation EC 1907/2006 as amended by regulation 987/2008, exempts "non-hazardous" glass components from registration.
- Items considered to be packing materials and which do not form part of, or are not required for the operation of, the product, are not considered to be within scope of this declaration.
- EO does not routinely analyze products for substances not purposely added or specified within the design specifications, drawings and assembly procedures.

This certification means that:

- EO's suppliers have confirmed the material composition of this product.
- EO has implemented rigorous procedures to document this compliance.
- The information provided may, or may not, be based upon actual test data, or on information from our Vendors, Raw Material Suppliers or Subcontractors.

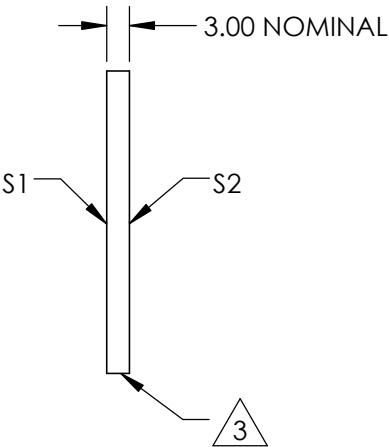
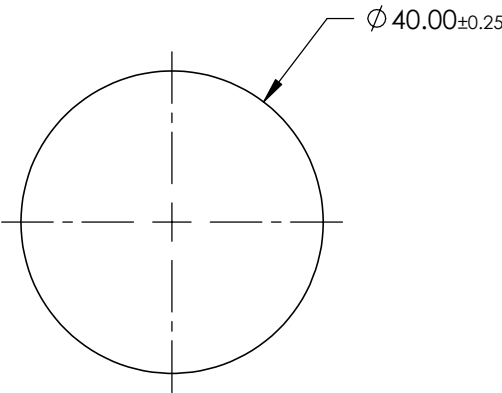
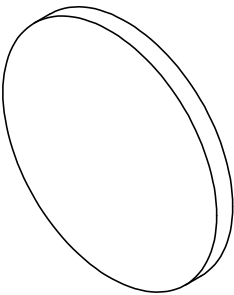


Jay Budd, Director of Corporate Compliance
June 20, 2025

Edmund Optics Inc. - 101 E Gloucester Pike, Barrington, NJ 08007 | 1-800-363-1992 | Compliance@edmundoptics.com


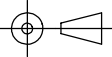
NOTES:

- 1. SUBSTRATE:
B270
- 2. COATING (APPLY ACROSS CLEAR APERTURE)
S1 & S2: NONE
- 3. FINE GRIND SURFACE
- 4. RoHS COMPLIANT



**FOR INFORMATION ONLY:
DO NOT MANUFACTURE
PARTS TO THIS DRAWING**

SPECIFICATIONS SUBJECT TO CHANGE WITHOUT NOTICE
DIMENSIONS ARE FOR REFERENCE ONLY

	S1	S2	 Edmund Optics®			
SHAPE	PLANO	PLANO		TITLE	40mm DIAMETER, UNCOATED, B270 WINDOW	
SURFACE QUALITY	60-40	60-40		DWG NO	45643	SHEET 1 OF 1
SURFACE FLATNESS	1λ	1λ				
BEVEL	PROTECTIVE AS NEEDED	PROTECTIVE AS NEEDED	ALL DIMS IN	mm		