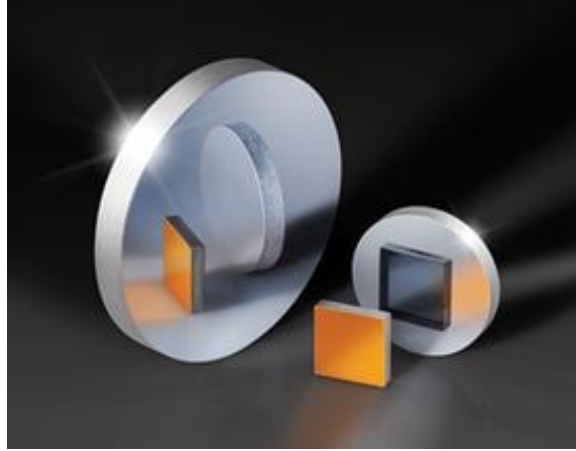


TECHSPEC® 25 x 25mm Protected Gold, $\lambda/20$ Mirror

#34-377



TECHSPEC® $\lambda/20$ First Surface Mirrors는 업계 최고 수준의 표면 정밀도와 품질 사양에 맞춰 연마된 제품으로서 반사 웨이브프론트 에러를 최소화합니다. 이 미러는 열팽창 계수가 낮은 정밀 용융 실리카 기판을 특징으로 하며, 다양한 코팅 옵션을 적용할 수 있어 가시광부터 적외선까지 넓은 스펙트럼을 포괄하는 용도와 결합이 가능합니다. TECHSPEC® $\lambda/20$ First Surface Mirrors는 빔을 조정하고 반사하는 용도에 사용하기 적합하며 다양한 크기, 두께 및 코팅 옵션과 함께 제공됩니다.

General

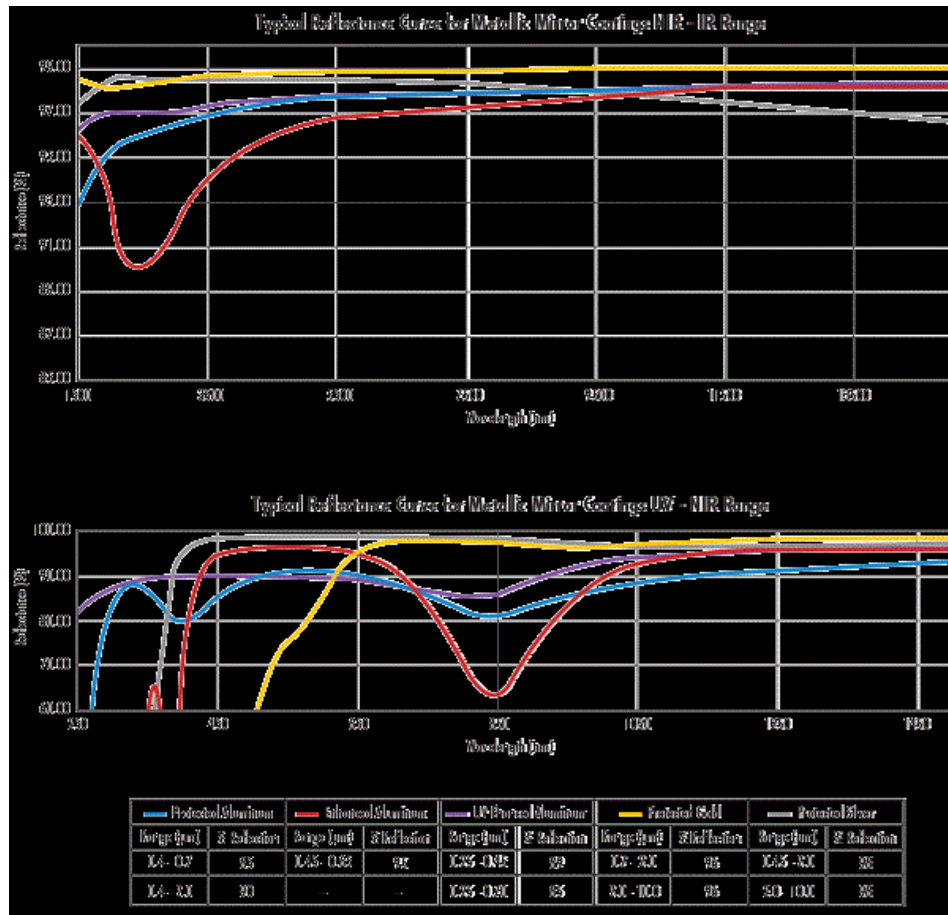
Type: Flat Mirror

Physical & Mechanical Properties

Back Surface:	Commercial Polish
Dimensions (mm):	25.0 x 25.0 +0.00/-0.20
Clear Aperture (%):	90.00
Edges:	Ground, protective bevel as needed
Parallelism (arcsec):	30.00
Thickness (mm):	4.00
Length (mm):	25.00
Width (mm):	25.00

Optical Properties

Surface Flatness (P-V):	$\lambda/20$ (flatness pre-coating)
Substrate:	Fused Silica (Corning 7980)
Surface Quality:	20-10
Coating Specification:	$R_{avg} >96\%$ @ 700 - 2000nm $R_{avg} >96\%$ @ 2000 - 10,000nm
Coating:	Protected Gold (700-10000nm)
Coating Type:	Metal
Wavelength Range (nm):	700 - 10000





June 22, 2025

To Whom It May Concern,

This document certifies that the product stated below has been reviewed as requested by Edmund Optics:

재고 번호	제품설명
34-377	25 x 25mm Protected Gold, $\lambda/20$ Mirror

This item is EU RoHS (2015/863/EU) compliant without the use of exemptions.

This certification means that:

- EO's suppliers have confirmed the material composition of this product.
- EO has implemented rigorous procedures to document this compliance.
- The information provided may, or may not, be based upon actual test data, or on information from our Vendors, Raw Material Suppliers or Subcontractors.



Jay Budd, Director of Corporate Compliance
June 22, 2025

Edmund Optics Inc. - 101 E Gloucester Pike, Barrington, NJ 08007 | 1-800-363-1992 | Compliance@edmundoptics.com

June 22, 2025

재고 번호	제품설명
34-377	25 x 25mm Protected Gold, $\lambda/20$ Mirror

Edmund Optics certifies that all articles included in this shipment are in compliance with the terms and conditions of this order. The company also certifies that the articles included in this shipment are in accordance to all agreed upon specifications and quality assurance provisions. Please call 1-800-363-1992 should any questions arise from this shipment.



Jeff Harvey- EVP of Operations



June 22, 2025

To Whom It May Concern,

This document certifies that the product stated below has been reviewed as requested by Edmund Optics:

재고 번호	제품설명
34-377	25 x 25mm Protected Gold, $\lambda/20$ Mirror

This item does not contain any of the substances listed on the Reach SVHC list as of 21 January 2025 in quantities exceeding 0.1% weight by weight.

Please note the following:

- Entry 11 of Annex V of the REACH regulation EC 1907/2006 as amended by regulation 987/2008, exempts "non-hazardous" glass components from registration.
- Items considered to be packing materials and which do not form part of, or are not required for the operation of, the product, are not considered to be within scope of this declaration.
- EO does not routinely analyze products for substances not purposely added or specified within the design specifications, drawings and assembly procedures.

This certification means that:

- EO's suppliers have confirmed the material composition of this product.
- EO has implemented rigorous procedures to document this compliance.
- The information provided may, or may not, be based upon actual test data, or on information from our Vendors, Raw Material Suppliers or Subcontractors.



Jay Budd, Director of Corporate Compliance
June 22, 2025

Edmund Optics Inc. - 101 E Gloucester Pike, Barrington, NJ 08007 | 1-800-363-1992 | Compliance@edmundoptics.com

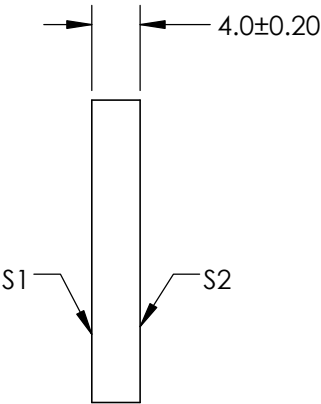
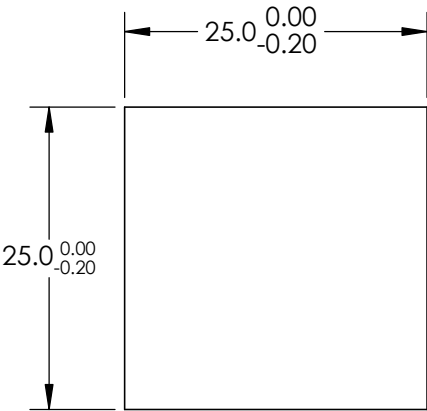
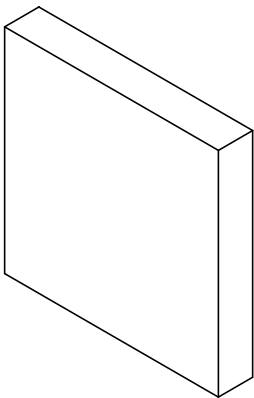
NOTES:

- 1. SUBSTRATE: FUSED SILICA
- 2. PARALLELISM ; 30 ARCSEC
- 3. COATING SPECIFICATION:

PROTECTED GOLD
S1:R(avg) >96% @ 700 - 2000nm
R(avg) > 96% @ 2000 - 10000nm
S2: NONE

- 4. POWER, IRREGULARITY, AND SURFACE QUALITY SPECIFICATIONS
APPLY ACROSS CLEAR APERTURE
- 5. ROHS COMPLIANT

**FOR INFORMATION ONLY:
DO NOT MANUFACTURE
PARTS TO THIS DRAWING**



SPECIFICATIONS SUBJECT TO CHANGE WITHOUT NOTICE
DIMENSIONS ARE FOR REFERENCE ONLY

	S1	S2
SHAPE	PLANO	PLANO
SURFACE QUALITY	20-10	COMMERCIAL POLISH
SURFACE FLATNESS	$\lambda/20$	N/A
BEVEL	PROTECTIVE AS NEEDED	PROTECTIVE AS NEEDED

THIRD ANGLE PROJECTION		TITLE	25.0 x 25.0mm, $\lambda/20$, PROTECTED GOLD MIRROR
ALL DIMS IN	mm	DWG NO	34377
			SHEET 1 OF 1