

750 x 1500mm, Low Profile Lab Table

#33-782



높은 해상도와 정밀도를 요구하는 용도를 위해 디자인된 이 제품은 160kg까지 안정적으로 진동 없이 사용 가능한 정교한 테이블입니다. Gimbal Piston™ isolator는 특허된 pneumatic isolation 기술을 사용하여 매우 낮은 진동을 테이블에 전달합니다. 탑재된 무게 변화와 같은 큰 변동도 수초 내에 없애 줍니다. 수평과 수직 isolation은 아주 낮은 입력 레벨로 되어 있습니다. 특허된 spill proof 테이블 윗면은 정교하게 탭이 난 구멍들을 보유하며 1/4-20 탭이 1인치 간격으로 된 English 버전과 M6탭이 25mm 간격으로 된 Metric 버전이 있습니다. Spill proof 면은 위험한 화학 제품이 사용 되었을 때 테이블 내부로 스며드는 것을 막아줍니다. 스테인레스 스틸로 된 윗면은 촘촘한 작은 크기의 벌집 모양 디자인으로 더 짧은 향상된 dampening을 90% 이상의 isolation efficiency와 제공합니다. 알루미늄으로 된 높이 조절 밸브는 아무 도구 없이 간편하고 정확하게 높이 조절 (+/-6mm)을 가능케 합니다. 테이블 다리는 13mm의 추가적인 조절을 할 수 있는 내장된 나사로 된 jack lever를 보유합니다. 베이스는 돔 모양으로 되어 바닥과 단단한 흔들림 없는 접촉을 보증합니다. 캐스터를 사용하여 쉽게 이동 가능합니다. 특수 사이즈와 액세서리에 대한 문의는 기술 영업부로 연락 주시기 바랍니다.

General

Type:	Metric
Vibration Rating:	5 Hz: Vertical = 70 - 85%, Horizontal = 75 - 90% 10 Hz: Vertical = 90 - 97%, Horizontal = 90 - 97%

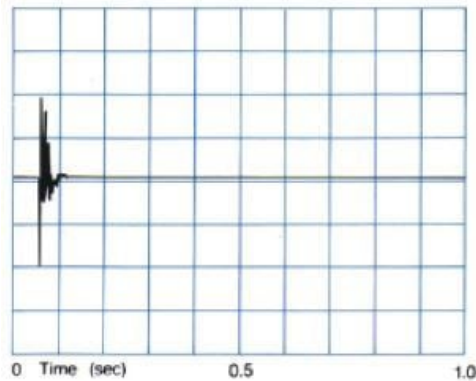
Physical & Mechanical Properties

Thickness (mm):	50.40
Length (mm):	1,500.00
Width (mm):	750.00
Construction:	Top: Stainless Steel Core: All Steel, High Density, Cell-Sized Honeycomb Core Frame: Medium Texture Black Powder Coat
Feed Pressure (psi):	80 (nitrogen or air)
Flatness (inches):	±0.005
Height (inches):	31.00
Load Capacity (lbs):	Gross: 1400 Net: 350
Weight (lbs):	600.00

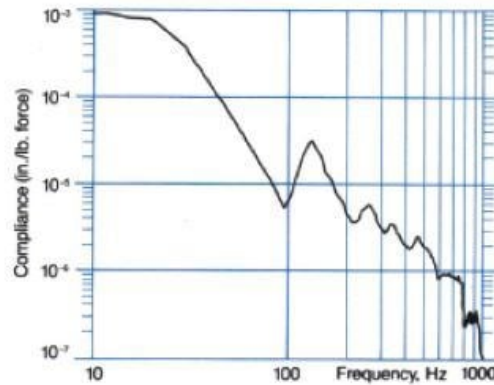
Threading & Mounting

Mounting Threads:	M6 on 25 Centerline
-------------------	---------------------

Damping



Compliance



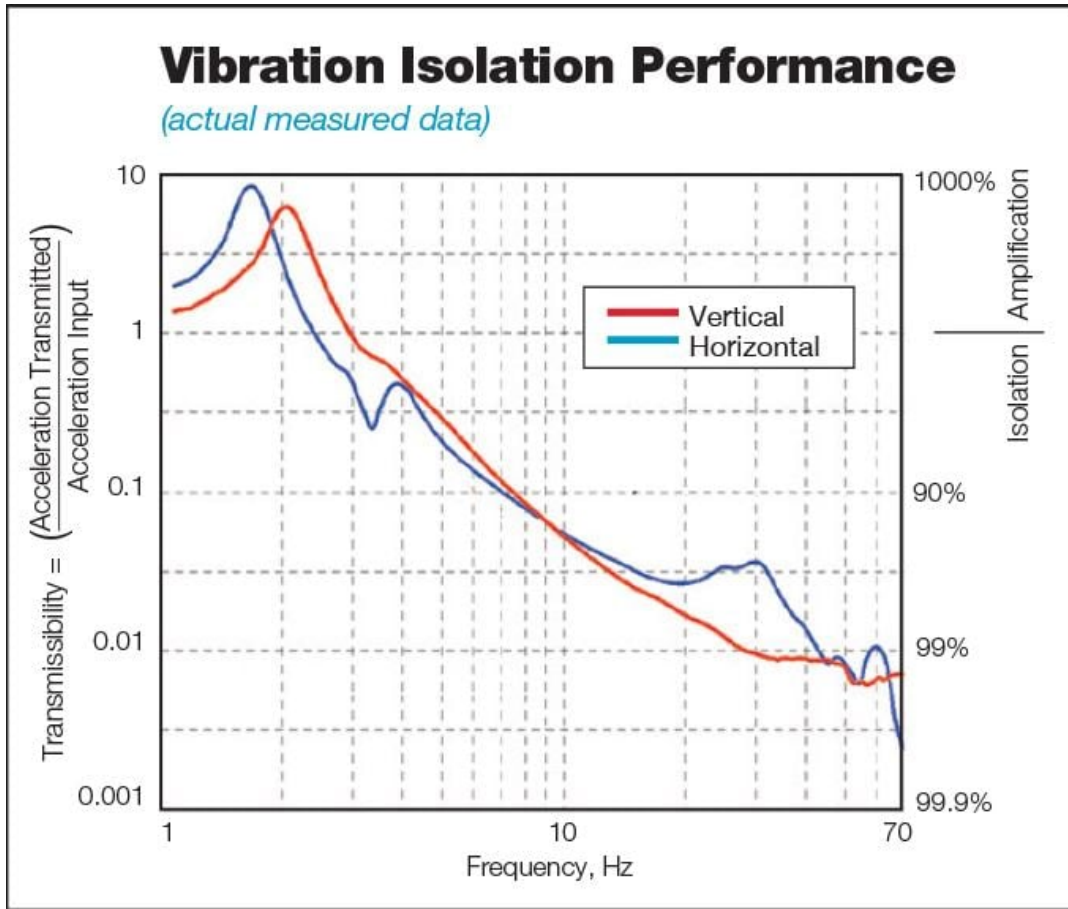
CleanBench™ Steel Top — 30 x 48 x 2 in. (750 x 1200 x 50 mm)

Structural Damping determines how quickly an excited resonance in a table top decays. The simplest way to measure damping is to hit the table top with a hammer and measure the decay with an accelerometer and oscilloscope or spectrum analyzer. The height of a resonance peak in the "compliance curve" also measures damping.

Compliance is a reciprocal measurement of the dynamic stiffness of a table top. The data are obtained by inputting a measured force to the table top with a calibrated hammer and measuring the resultant acceleration (or displacement) with an accelerometer. Compliance is the ratio of displacement to force expressed as a function of frequency.

Isolator Performance

All CleanBench tables incorporate TMC's Gimbal Piston Air Isolators as a standard feature. The Gimbal Piston has consistently shown to out-perform other air isolators in side-by-side testing. It offers outstanding low frequency vibration isolation in all axes and maintains its performance specifications even when subjected to extremely low input levels of excitation. Proprietary damping techniques allow the Gimbal Piston to stabilize relatively top-heavy payloads and quickly dissipate disturbances of the isolated table top.



ERROR: There are no stock numbers to display!

Edmund Optics, Inc. - 101 E Gloucester Pike, Barrington, NJ 08007 | 800-363-1992 | Compliance@edmundoptics.com

Close Window

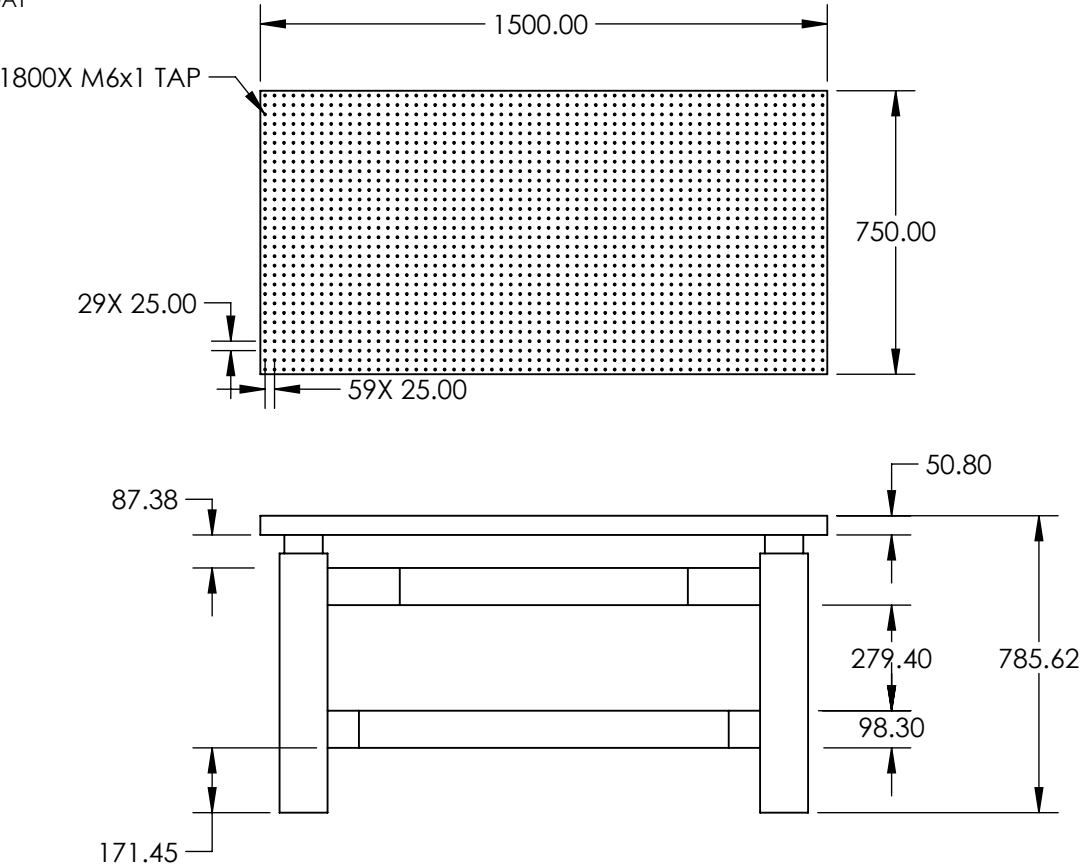
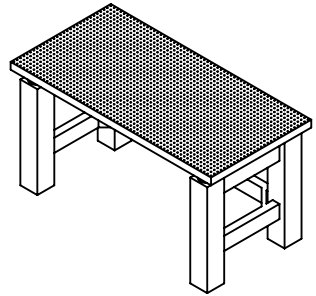
ERROR: There are no stock numbers to display!

Edmund Optics, Inc. - 101 E Gloucester Pike, Barrington, NJ 08007 | 800-363-1992 | Compliance@edmundoptics.com

Close Window

NOTES:

1. VIBRATION RATING:
5 Hz: Vertical = 70-85%, Horizontal = 75-90%
10 Hz: Vertical = 90-97%, Horizontal = 90-97%
2. FEED PRESSURE (psi): 80 (nitrogen or air)
3. CONSTRUCTION:
TOP: STAINLESS STEEL
CORE: ALL STEEL, HIGH DENSITY, CELL-SIZED HONEYCOMB CORE
FRAME: MEDIUM TEXTURE BLACK POWDER COAT
4. WEIGHT: 600 lbs
5. LOAD CAPACITY (lbs):
GROSS: 1400
NET: 350
6. ROHS: COMPLIANT



SPECIFICATIONS SUBJECT TO CHANGE WITHOUT NOTICE
DIMENSIONS ARE FOR REFERENCE ONLY

**FOR INFORMATION ONLY:
DO NOT MANUFACTURE
PARTS TO THIS DRAWING**

EO[®] Edmund Optics[®]

THIRD ANGLE PROJECTION		TITLE	750 x 1500mm, LOW PROFILE LAB TABLE	
ALL DIMS IN	mm	DWG NO	33782	SHEET 1 OF 1