

TECHSPEC® 16mm, f/1.6 Ci Series Fixed Focal Length Lens

#85-348



16mm Focal Length

해당 제품은 TECHSPEC® C 시리즈 렌즈의 간소화 버전입니다. TECHSPEC® C 시리즈 렌즈와 마찬가지로 렌즈 간의 변화(lens-to-lens variation)가 적고 BBAR 코팅 처리가 되어 있어 빛의 투과를 극대화하는 동시에 무게와 크기를 줄였습니다. 초점 조절 및 고정이 가능하므로 기기 결합에 가장 적합한 포커스 위치를 설정하여 고정할 수 있습니다. 해당 제품은 공장 검사 및 자동화부터 벤치탑 바이오메디컬 기기까지 다양한 어플리케이션에서의 대량 구매를 고려한 특수 설계가 적용되었습니다. 해당 제품은 다양한 조리개 옵션을 제공하므로 해상도, 처리량, 피사계 심도를 자유자재로 조절할 수 있습니다.

General

Type:	Fixed Focal Length Lens
Imaging Lens Type:	Compact Lens with Fixed Aperture

Physical & Mechanical Properties

Iris Option:	Fixed
Length (mm):	40.80
Maximum Diameter (mm):	26.5
Weight (g):	37
Maximum Rear Protrusion (mm):	1.09
Diameter (mm):	26.50

Optical Properties

Horizontal Field of View, 1/2" Sensor:	44.5mm - 22.7°
Horizontal Field of View, 2/3" Sensor:	61.4mm - 30.9°
Horizontal Field of View, 1/3" Sensor:	33.3mm - 17.1°
Maximum Image Circle (mm):	11.00
Numerical Aperture NA, Object Side:	0.0445
Horizontal Field of View @ Max Sensor Format:	61.4mm - 30.9°
Number of Elements (Groups):	7 (6)
Horizontal Field of View, 1/1.8" Sensor:	50.1mm - 25.2°
Horizontal Field of View, 1/2.5" Sensor:	39.6mm - 20.2°
Focal Length FL (mm):	16.00
Primary Magnification PMAG:	0.149
Working Distance (mm):	100 - ∞
Aperture (f/#):	f/1.6
Coating:	425 - 675nm BBAR
Coating Specification:	425 - 675nm BBAR
Entrance Pupil Position (mm):	9.12
Horizontal Field of View, 1/4" Sensor:	25mm - 12.8°
Object Space Principal Plane (mm):	21.30
Image Space Principal Plane (mm):	-3.00
Field of View at Max Sensor Format:	Horizontal: 59.8mm - 31° Vertical: 44.6mm - 23.4° Diagonal: 75.1mm - 38.3°
Maximum Distortion (%):	-1.26
Exit Pupil Position (mm):	-53.79
Lens Wavelength Range:	VIS

Sensor

Maximum Sensor Format:	2/3"
------------------------	------

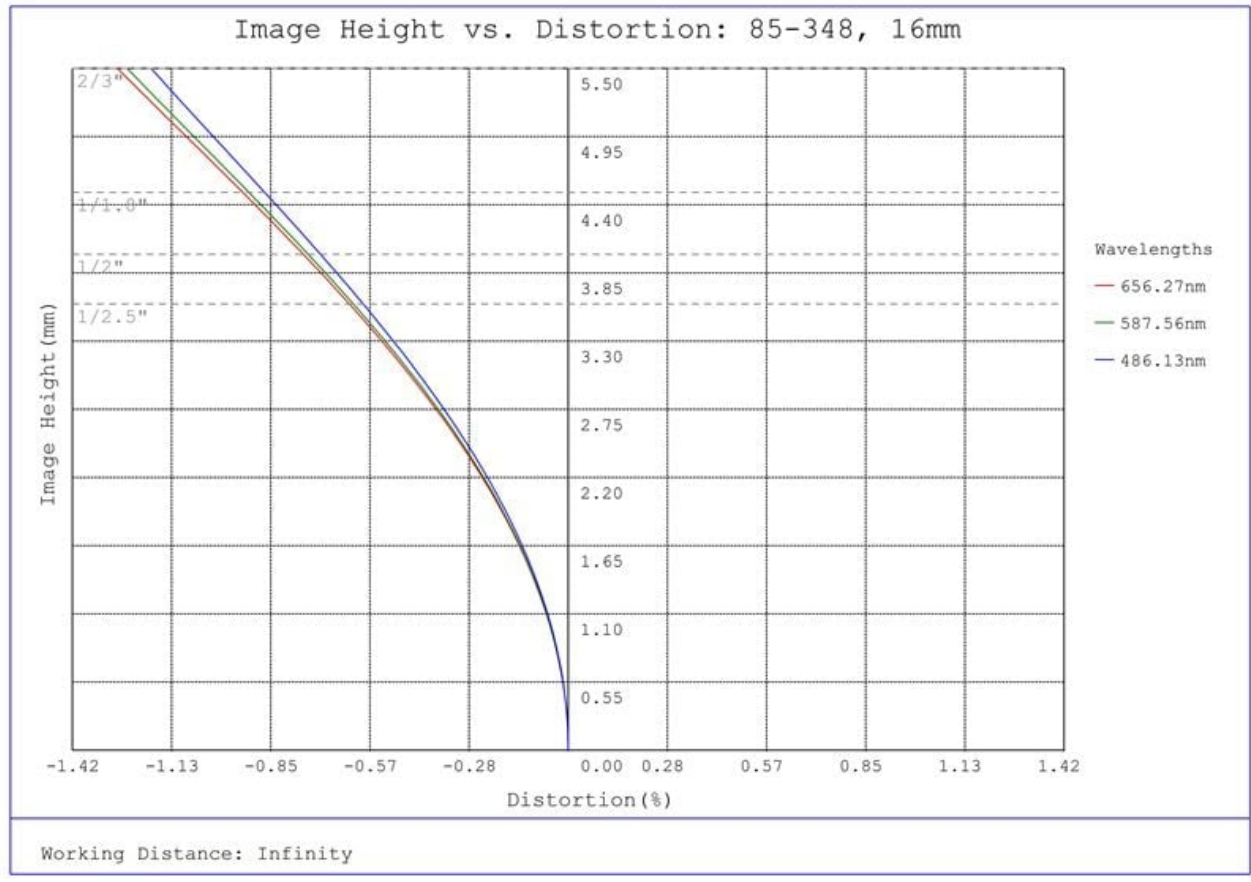
Threading & Mounting

Filter Thread:	M25.5 x 0.50 (Male)
----------------	---------------------

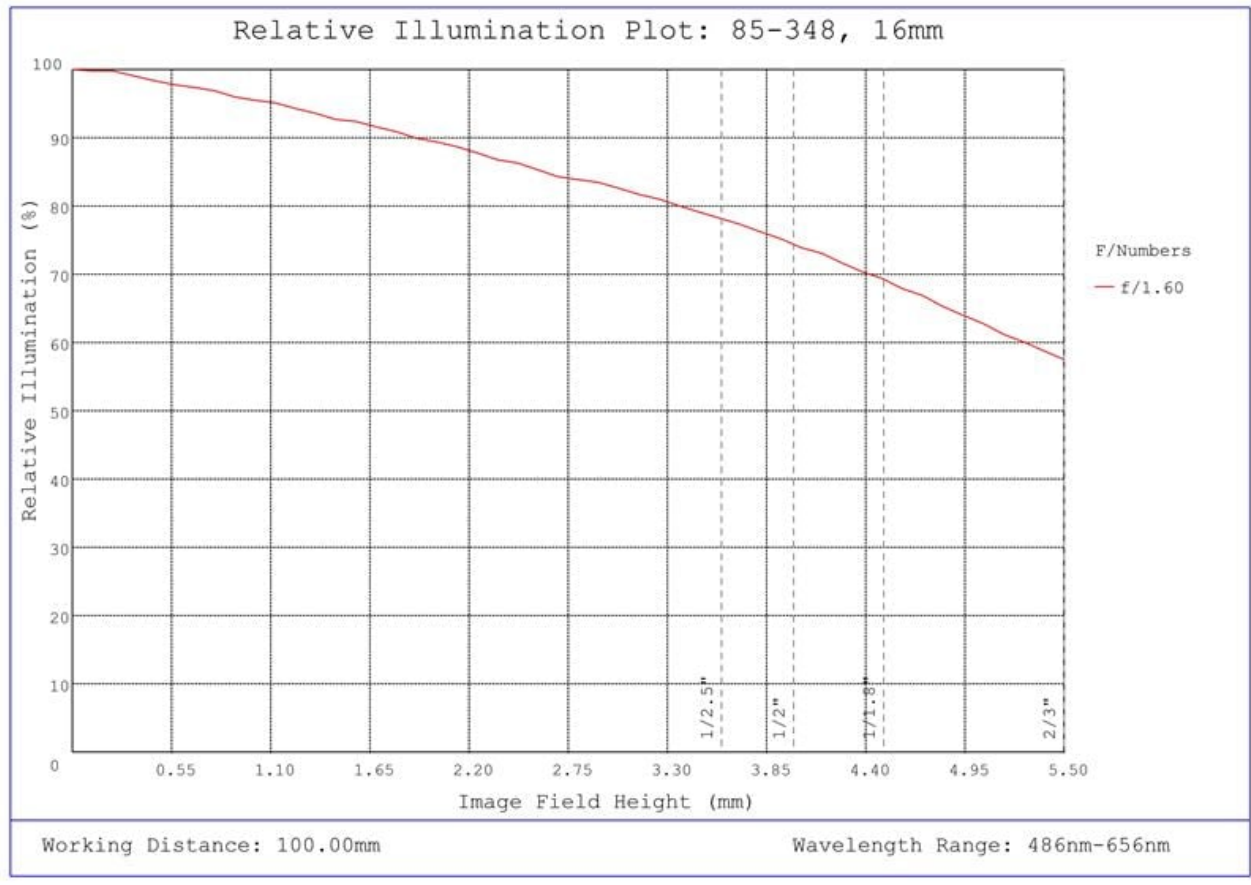
Filter Thread Adapter:	#89-942 (Required)
Front Thread:	M22.0 x 0.75 (Male)
Mount:	C-Mount

Environmental & Durability Factors

Storage Temperature (°C):	-20 to +60 For questions regarding operating temperature please contact our support team
---------------------------	------------------------------------------------------------------------------------------



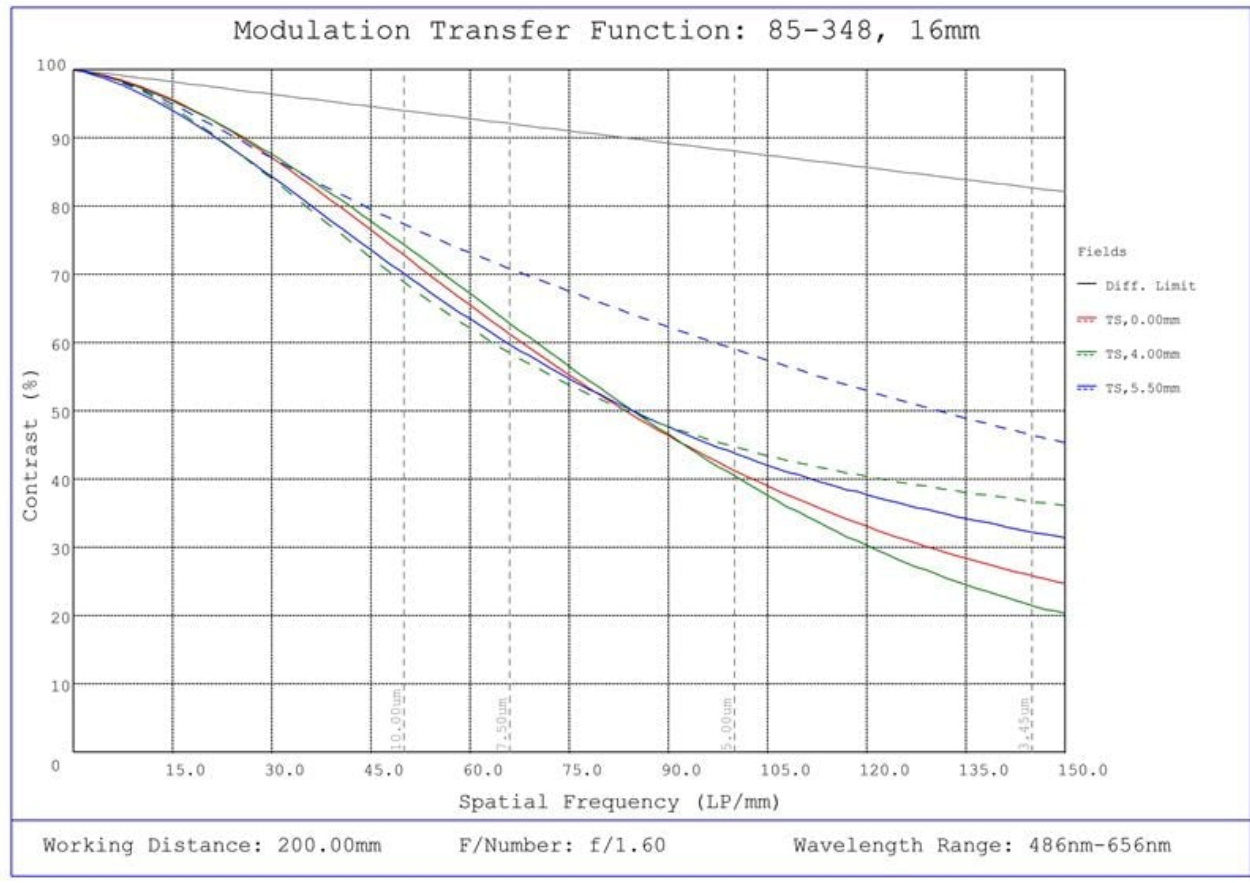
#85-348, 16mm, f/1.6 Ci Series Fixed Focal Length Lens, Distortion Plot



#85-348, 16mm, f/1.6 Ci Series Fixed Focal Length Lens, Relative Illumination Plot



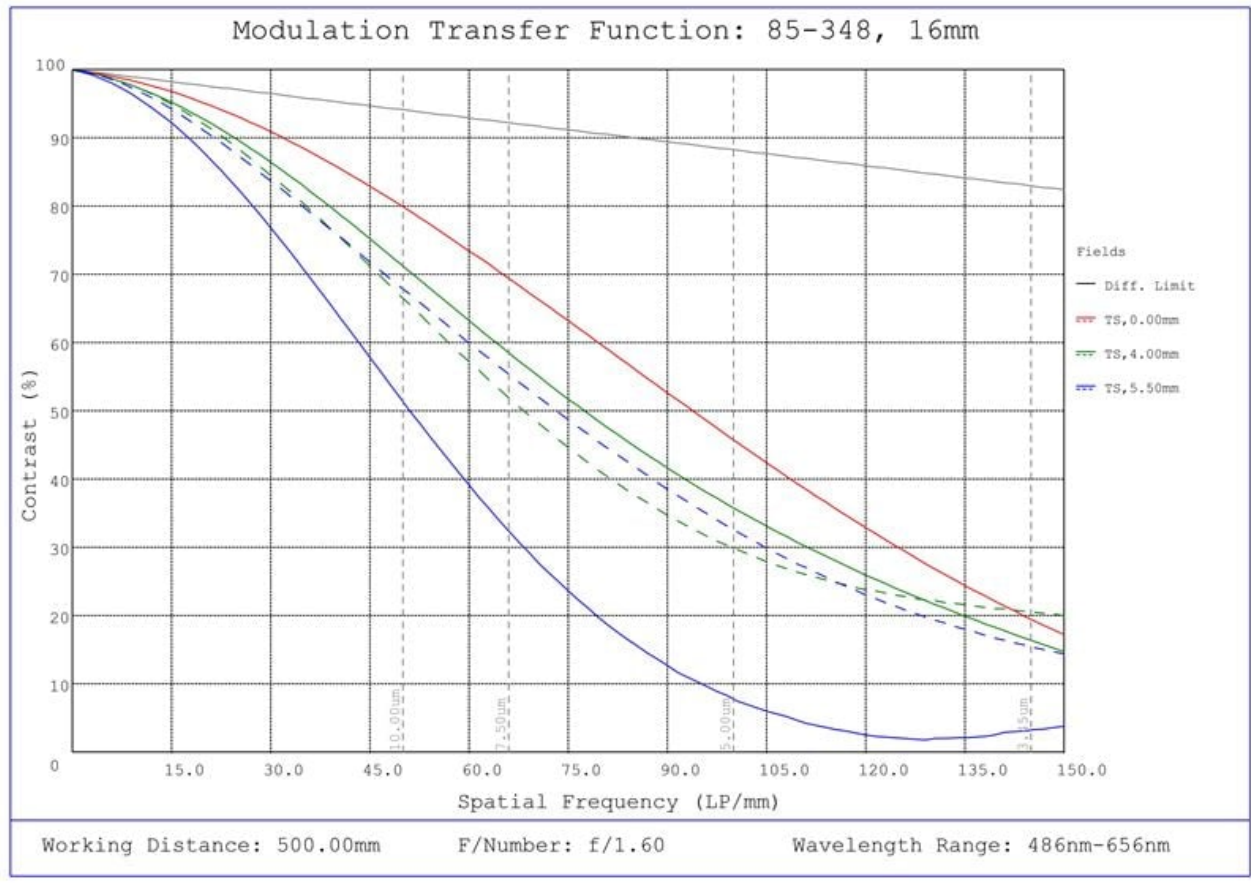
#85-348, 16mm, f/1.6 Ci Series Fixed Focal Length Lens, Working Distance versus Field of View Plot



#85-348, 16mm, f/1.6 Ci Series Fixed Focal Length Lens, Modulated Transfer Function (MTF) Plot, 200mm Working Distance, f1.6



#85-348, 16mm, f/1.6 Ci Series Fixed Focal Length Lens, Depth of Field Plot, 200mm Working Distance, f1.6



#85-348, 16mm, f/1.6 Ci Series Fixed Focal Length Lens, Modulated Transfer Function (MTF) Plot, 500mm Working Distance, f1.6



#85-348, 16mm, f/1.6 Ci Series Fixed Focal Length Lens, Depth of Field Plot, 500mm Working Distance, f1.6



June 20, 2025

To Whom It May Concern,

This document certifies that the product stated below has been reviewed as requested by Edmund Optics:

재고 번호	제품설명
85-348	16mm, f/1.6 Ci Series Fixed Focal Length Lens

This item is EU RoHS (2015/863/EU) compliant without the use of exemptions.

This certification means that:

- EO's suppliers have confirmed the material composition of this product.
- EO has implemented rigorous procedures to document this compliance.
- The information provided may, or may not, be based upon actual test data, or on information from our Vendors, Raw Material Suppliers or Subcontractors.



Jay Budd, Director of Corporate Compliance
June 20, 2025

Edmund Optics Inc. - 101 E Gloucester Pike, Barrington, NJ 08007 | 1-800-363-1992 | Compliance@edmundoptics.com



June 20, 2025

To Whom It May Concern,

This document certifies that the product stated below has been reviewed as requested by Edmund Optics:

재고 번호	제품설명
85-348	16mm, f/1.6 Ci Series Fixed Focal Length Lens

This item does not contain any of the substances listed on the Reach SVHC list as of 16 July 2019 in quantities exceeding 0.1% weight by weight.

Please note the following:

- Entry 11 of Annex V of the REACH regulation EC 1907/2006 as amended by regulation 987/2008, exempts "non-hazardous" glass components from registration.
- Items considered to be packing materials and which do not form part of, or are not required for the operation of, the product, are not considered to be within scope of this declaration.
- EO does not routinely analyze products for substances not purposely added or specified within the design specifications, drawings and assembly procedures.

This certification means that:

- EO's suppliers have confirmed the material composition of this product.
- EO has implemented rigorous procedures to document this compliance.
- The information provided may, or may not, be based upon actual test data, or on information from our Vendors, Raw Material Suppliers or Subcontractors.



Jay Budd, Director of Corporate Compliance
June 20, 2025

Edmund Optics Inc. - 101 E Gloucester Pike, Barrington, NJ 08007 | 1-800-363-1992 | Compliance@edmundoptics.com



June 20, 2025

재고 번호

85-348

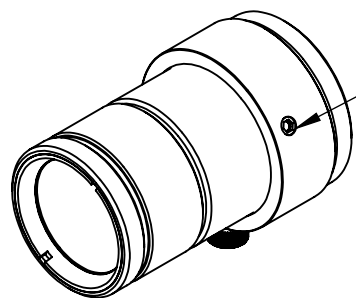
제품설명

16mm, f/1.6 Ci Series Fixed Focal Length Lens

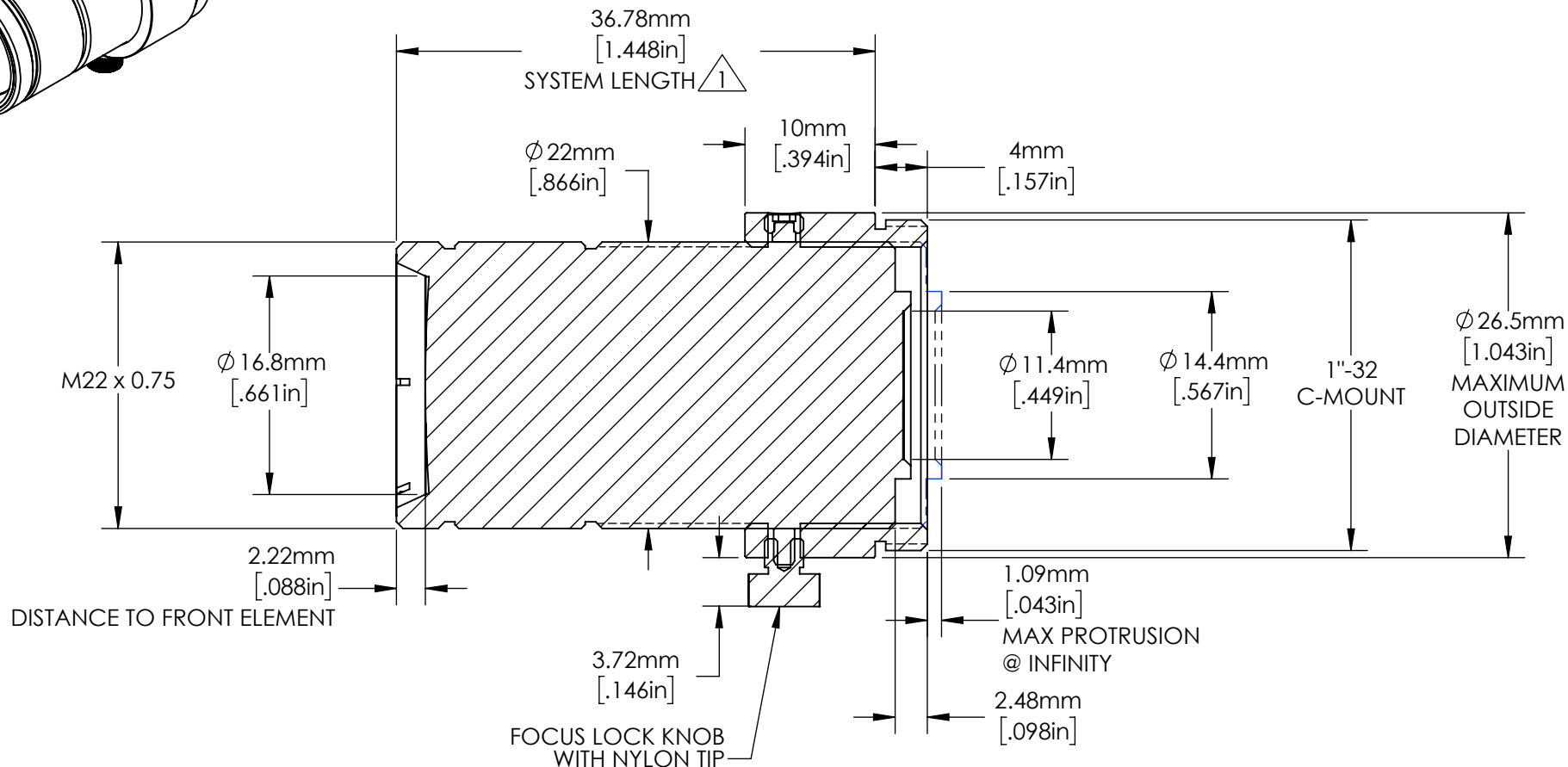
Edmund Optics certifies that all articles included in this shipment are in compliance with the terms and conditions of this order. The company also certifies that the articles included in this shipment are in accordance to all agreed upon specifications and quality assurance provisions. Please call 1-800-363-1992 should any questions arise from this shipment.



Jeff Harvey- EVP of Operations



(2) M3 SET SCREWS WITH NYLON TIP
FOR OPTIONAL FOCUS LOCKING
@ 120° FROM LOCK KNOB



NOTES:

$\triangle 1$. @ 100mm WORKING DISTANCE. MEASURES 34.41mm[1.355in] @ INFINITY.

2. FILTER THREAD: M25.5 x 0.5 WITH REQUIRED ADAPTER #89-941

ALIGNED SECTION VIEW

**FOR INFORMATION ONLY:
DO NOT MANUFACTURE
PARTS TO THIS DRAWING**

SPECIFICATIONS SUBJECT TO CHANGE
WITHOUT NOTICE.
DIMENSIONS ARE FOR REFERENCE ONLY.
FOR DETAILED SPECIFICATIONS,
PLEASE REFER TO THE SPEC SHEET.



Edmund Optics®

TITLE	16mm, f/1.4 Ci Series Fixed Focal Length Lens		
DWG NO	85348		SHEET 1 OF 1